

NANLITE

Light Your Frames!

Guangdong Nanguang Photo&Video Systems Co., Ltd



NANLITE

The way we capture images is evolving. Content creation is more approachable and diverse than ever before. Projects that could only be accomplished by large studios and huge budgets are now in reach of anyone with a dream and the dedication of chasing the dream. It's time to redefine lighting and let it evolve to the next level. With this in mind, NANGUANG, a company passionately dedicated to the lighting industry for 29 years, has started a new brand--NANLITE.

At NANLITE, we strive to design lighting products that offer image-makers new possibilities and push them to expand their creative horizons as we vow to expand ours as well. We listen to customers' feedback, focus on design details, and optimize the user experience of our products. We stand behind all of our products and provide the best technical support to help customers accomplish their vision effortlessly.

Our long history has taught us how to carefully select our materials, continually improve our manufacturing processes, and maintain strict quality control on all of our products. We hold ourselves to the highest standards in manufacturing and design in hopes that the lights we produce will ignite new ideas for image-making. We believe the value of our lights is not just in the lighting itself; it's more about helping creatives fulfill their vision. We hope that, with our lighting, a creator's only limitation will be their imagination.

CONTENTS

4-19	Forza Series Spot Light
20-25	MixPanel Series RGBWW Panel Light
26-29	PavoTube Series RGBWW Tube Light
30-35	Mix Series RGBWW Light
36-38	LumiPad Series Soft Panel
39-43	FS Series Spot Light
44-48	Compac Series Studio Light
49-53	LitoLite Series LED Light
54-59	halo Series Ring Light
60-69	Forza 150
70-76	PJ-BM-19/36
77-84	PavoTube II X Series
85-92	Lighting Modifiers & Accessories & Bag
93-94	Backdrop Elevator Series

NANLITE



Forza Series Spot Light

Compact Design . Ultra Bright



Mobile APP Control



Wireless Remote Control

Forza 60/60B

Palm-Sized Lightweight Design, Mighty Output

Forza 60B **Bi-color**

1. Variable color temperature of 2700K-6500K, CRI: Average 96, TLCI: Average 98.
2. Palm-sized body with mighty output (13830 Lux @1 meter (5600K) with standard reflector).
3. 12 Built-in Upgraded Practical Lighting Effects: CCT Loop, INT Loop, Flash, Pulse, Storm, TV, Paparazzi, Candle/Fire, Bad Bulb, Firework, Explosion and Welding.
4. FM Mount.
5. Power anywhere, run with AC adapter, NP-F batteries or a V-mount battery.
6. Support firmware updates via USB-port & Wireless control via 2.4G, Bluetooth.

Forza 60 **Daylight**

1. Accurate daylight-balanced colors at 5600K, CRI: 98 and TLCI: 95
2. Palm-sized body with mighty output (18820 Lux @ 1 meter (5600K) with standard reflector).
3. 4 Built-in Practical Lighting Effects: Storm, Flash, TV, Bad Bulb.
4. FM Mount.
5. Power anywhere, run with AC adapter, NP-F batteries or a V-mount battery.



Includes

Light × 1, Power Adapter × 1, Power Cable 3M × 1, Reflector × 1, Carrying Bag × 1, BH-FZ60 Battery Grip × 1, AS-BA-FZ60 Bowens Adapter × 1, COB Protective Cap × 1



Forza 60/60B Accessories (Optional)



RC-1
Remote Controller



BT-BA-SNP/DC
Sony NP Battery Adapter



SB-FZ60 + EC-FZ60
Parabolic Softbox
with Eggcrate
(Eggcrate: Optional)



WS-RC-C2
2.4G Remote Controller



BT-BA-V
V-mount Battery Adapter
with Clamp



LT-FZ60
Lantern Softbox



CB-DT/DC
D-tap Cable



BH-FZ60
Battery Grip
(suggested to work
with NP-F970)



AS-BA-FZ60
Bowens Adapter



BH-FZ60-V
V-mount Battery Grip



FL-11
Fresnel Lens

Forza *Technical Data*

Model		<i>Forza 60</i>	<i>Forza 60B</i>
Rated Power		80W	80W
Input Voltage/Current		DC 15V/6A Max, AC 100-240V 50/60Hz	DC 15V/6A Max, AC 100-240V 50/60Hz
CRI		98	Average 96
TLCI		95	Average 98
CCT		5600K	2700K - 6500K
Dimming		0 to 100 % continuous	0 to 100 % continuous
Control		On-board, 2.4G	On-board, 2.4G, Bluetooth
Product Size		199 × 85 × 105mm / 7.83 × 3.35 × 4.13"	199 × 85 × 105mm / 7.83 × 3.35 × 4.13"
Product Weight	Light fixture	0.83kg / 1.83lb	0.83kg / 1.83lb
	Light fixture+ Power Adapter	1.28kg / 2.82lb	1.28kg / 2.82lb

Illumination(lux / fc)

Model/CCT	<i>Forza 60(5600K)</i>					<i>Forza60B(3200K)</i>				<i>Forza 60B(5600K)</i>			
Distance	1M	2M	3M	4M	5M	1M	2M	3M	4M	1M	2M	3M	4M
Light Only	3139 lux 292 fc	759 lux 71 fc	354 lux 33 fc	207 lux 19 fc	137 lux 13 fc	1919 lux 178 fc	480 lux 45 fc	224 lux 21 fc	134 lux 12 fc	2246 lux 209 fc	564 lux 52 fc	263 lux 24 fc	156 lux 14 fc
With Standard reflector	18820 lux 1748 fc	4011 lux 373 fc	1685 lux 157 fc	934 lux 87 fc	605 lux 56 fc	11480 lux 1066 fc	2420 lux 225 fc	1030 lux 96 fc	567 lux 53 fc	13830 lux 1285 fc	2927 lux 272 fc	1251 lux 116 fc	687 lux 64 fc
With Fresnel lens Spot 10°	36126 lux 3356 fc	8813 lux 819 fc	3874 lux 360 fc	2161 lux 201 fc	1377 lux 128 fc	27400 lux 2545 fc	6418 lux 596 fc	2813 lux 261 fc	1565 lux 145 fc	33450 lux 3108 fc	7944 lux 738 fc	3476 lux 323 fc	1924 lux 179 fc
With Fresnel lens Flood 45°	8334 lux 774 fc	2144 lux 199 fc	969 lux 90 fc	551 lux 51 fc	359 lux 33 fc	5978 lux 555 fc	1458 lux 135 fc	646 lux 60 fc	367 lux 34 fc	7100 lux 660 fc	1736 lux 161 fc	777 lux 72 fc	437 lux 41 fc

NANLITE



Forza 60 & 60B Projection Attachment

Achieve your further perspective

PJ-FZ60

17 times without Lens **3** times Standard reflector **1.4** times Fresnel lens spot

Forza 60 with PJ-FZ60-19 Technical Data for your reference

Develop and design a whole set of optics for Forza 60 / 60B,
allow for correcting pixel error to improve uniformity and reduce distortion,
at the same time, boost Light Transmission Ratio(LTR) and CCT accuracy.

Includes

PJ-FZ60-LENS-19 / 36 Lens x 1, PJ-FZ60 Projection Attachment x 1,
GOBO x 4, GOBO Frame x 1, GEL Frame x 1, Carrying Bag x 1, User Manual x 1



PJ-FZ60 Accessories (Optional)



PJ-FZ60-AI
18 Bladed Adjustable Iris Diaphragm



Projection Attachment
with 19° Lens



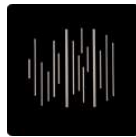
Projection Attachment
with 36° Lens



NL05



NL06



NL07



NL15



NL16



NL17



NL08



NL09



NL10



NL18



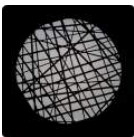
NL19



NL20



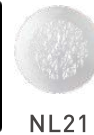
NL11



NL12



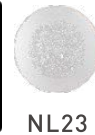
NL13



NL21



NL22



NL23



NL14

AS-GB-FZ60-SET1
Forza60/60B Projection
Attachment GOBO Set 1



NL24

AS-GB-FZ60-SET2
Forza60/60B Projection
Attachment GOBO Set 2

PJ-FZ60

Technical Data

Model	PJ-FZ60-19	PJ-FZ60-36
Beam Angle	19°	36°
Compatible Product or Mount	Forza 60, Forza 60B	Forza 60, Forza 60B
Product Size	Projection Attachment without Lens: 215 × 160 × 235mm / 8.46 × 6.30 × 9.25" 19° Lens: φ117 × 150mm	Projection Attachment without Lens: 215 × 160 × 235mm / 8.46 × 6.30 × 9.25" 36° Lens: φ4.61 × 5.91"
Product Weight	Projection Attachment without Lens: 0.89kg / 1.96lb 19° Lens: 0.64kg / 1.41lb	Projection Attachment without Lens: 0.89kg / 1.96lb 36° Lens: 0.69kg / 1.52lb

Illumination(lux / fc)

Model	Forza 60 + PJ-FZ60-19	Forza 60B+PJ-FZ60-19					Forza 60 + PJ-FZ60-36	Forza 60B+PJ-FZ60-36				
CCT	5600K	2700K	3200K	4300K	5600K	6500K	5600K	2700K	3200K	4300K	5600K	6500K
1M	54620 lux 5074 fc	31700 lux 2945 fc	36190 lux 3362 fc	45210 lux 4200 fc	46710 lux 4339 fc	49880 lux 4634 fc	22707 lux 2109 fc	13142 lux 1221 fc	14230 lux 1322 fc	18003 lux 1672 fc	18542 lux 1723 fc	19708 lux 1831 fc
3M	4229 lux 393 fc	2465 lux 229 fc	2743 lux 255 fc	3550 lux 330 fc	3800 lux 353 fc	3848 lux 357 fc	1776 lux 165 fc	1027 lux 95 fc	1111 lux 103 fc	1398 lux 130 fc	1444 lux 134 fc	1533 lux 142 fc
5M	1441 lux 134 fc	837 lux 78 fc	907 lux 84 fc	1197 lux 111 fc	1258 lux 117 fc	1308 lux 122 fc	614 lux 57 fc	353 lux 33 fc	382 lux 35 fc	479 lux 44 fc	494 lux 46 fc	523 lux 49 fc
7M	717 lux 67 fc	424 lux 39 fc	460 lux 43 fc	597 lux 55 fc	622 lux 58 fc	652 lux 61 fc	313 lux 29 fc	179 lux 17 fc	194 lux 18 fc	243 lux 23 fc	250 lux 23 fc	268 lux 25 fc



Forza 200/300/300B/500 LED Spot Light

Compact Design . Powerful Output . Special Lighting Effects . Bowens Mount

Forza 200 Daylight

1. Accurate daylight-balanced colors at 5600K, CRI: 98 TLCI: 97
2. High 220W output, 37540 Lux @ 1m (with standard reflector).
3. 11 Built-in Upgraded Practical Lighting Effects:
INT Loop, Flash, Pulse, Storm, TV, Paparazzi, Candle/Fire, Bad Bulb, Firework, Explosion and Welding.
4. Separate design for fixture head and control unit & Dual power supply.
5. Standard Bowens Mount.
6. USB port to support firmware updates & Control via 2.4G, Bluetooth or DMX.

Forza 300/500 Daylight

1. Accurate daylight-balanced colors at 5600K, CRI: 98 and TLCI:95
2. High output of 340W/545W.
3. 4 Built-in Practical Lighting Effects: Storm, Flash, TV, Bad Bulb
4. Separate design for fixture head and control unit & Dual power supply.
5. Standard Bowens Mount.
6. Control via 2.4G or DMX.

Includes

Light × 1, Control Unit × 1, Power Adapter × 1, Power Cable 3M × 1, Connecting Cable 2.5M × 1, COB Protective Cap × 1, Reflector × 1, Light Stand Clamp × 1, Carrying Bag × 1



Forza 300B **Bi-color**

1. Variable color temperature of 2700K-6500K, CRI: Average 96, TLCI: Average 98
2. High output of 355W (33920 lux @1 meter 5600K with standard reflector)
3. 12 Built-in Customizable Practical Lighting Effects: CCT Loop, INT Loop, Flash, Pulse, Storm, TV, Paparazzi, Candle/Fire, Bad Bulb, Firework, Explosion and Welding.
4. Separate design for fixture head and control unit & Dual power supply
5. USB port to support firmware updates
6. Control options: On-board, 2.4G, DMX and Bluetooth.



Includes

Light × 1, Control Unit × 1, Power Adapter × 1, Power Cable 3M × 1, Connecting Cable 2.5M × 1, COB Protective Cap × 1, Reflector with Standard Bowens Mount × 1, 2.4G Remote Controller × 1, φ35 Light Stand Clamp × 1, Carrying Bag × 1, DMX Reference Guide × 1



© Kal Visuals



© Alexandru Don



© Kal Visuals

Forza 200/300/300B/500 Accessories (Optional)



BT-V-14.8V160
Battery V-mount 14.8V 160WH

BT-CGV-14.8V-1
Battery Charger for Single 14.8V V-mount Battery



FL-20G Fresnel Lens



BT-V-26V230/BT-V-26V270
Battery V-mount 26V 230WH/270WH

BT-CGV-26V-1/BT-CGV-26V-2
Battery Charger for Single/Dual 26V V-mount Battery



SB-ST-140X30 Strip Softbox
SB-AS-110X45 Asymmetric Softbox
EC-140X30/EC-110X45 Eggcrate (Optional)



CB-FZ-5 Forza 5M Connecting Cable



LT-FZ60/LT-80/LT-120
Lantern Softbox



RC-1 Remote Controller



SB-PR-90/120-Q Quick Setup Parabolic Softbox
SB-PR-150 Parabolic Softbox
EC-PR90/120/150 Eggcrate(Optional)



WS-RC-C2 2.4G Remote Controller



U-135DS/U-165DT/U-180ST
Umbrella

Forza *Technical Data*

Model		<i>Forza 200</i>	<i>Forza 300</i>	<i>Forza 300B</i>	<i>Forza 500</i>
Rated Power		220W	340W	355W	545W
Input Voltage/Current		DC24V/10.4A Max, AC100-240V 50/60Hz	DC48V/8.4A Max, AC100-240V 50/60Hz	DC48V/8.4A Max, AC100-240V 50/60Hz	DC48V/12.5A Max, AC100-240V 50/60Hz
CRI		98	98	Average 96	98
TLCI		97	95	Average 98	95
CCT		5600K	5600K	2700K-6500K	5600K
Dimming		0 to 100 % continuous	0 to 100 % continuous	0 to 100 % continuous	0 to 100 % continuous
Control		On-board, 2.4G, DMX, Bluetooth	On-board, 2.4G,DMX	On-board, 2.4G, Bluetooth, DMX	On-board, 2.4G, DMX
Product Size		315 × 210 × 115mm / 12.40 × 8.27 × 4.53"	330 × 225 × 120mm / 12.99 × 8.86 × 4.72"	330 × 225 × 120mm / 12.99 × 8.86 × 4.72"	330 × 225 × 140mm / 12.99 × 8.86 × 5.51"
Product Weight	Light fixture	1.78kg / 3.92lb	2.3kg / 5.07lb	2.3kg / 5.07lb	2.7kg / 5.95lb
	Light fixture+ Control Unit+ Power Adapter	4.04kg / 8.9lb	5.04kg / 11.11lb	5.04kg / 11.11lb	6.00kg / 13.23lb

Illumination(lux / fc)

Model	<i>Forza 200</i>			<i>Forza 300</i>			<i>Forza 300B(3200K)</i>			<i>Forza 300B(5600K)</i>			<i>Forza 500</i>		
	1M	3M	5M	1M	3M	5M	1M	3M	5M	1M	3M	5M	1M	3M	5M
Without lens	9213 lux 856 fc	1029 lux 96 fc	412 lux 38 fc	13200 lux 1226 fc	1630 lux 151 fc	622 lux 58 fc	6646 lux 617 fc	864 lux 80 fc	356 lux 33 fc	8901 lux 827 fc	1174 lux 109 fc	483 lux 45 fc	20070 lux 1865 fc	2276 lux 211 fc	888 lux 82 fc
With Standard reflector	37540 lux 3487 fc	3351 lux 311 fc	1217 lux 113 fc	68060 lux 6323 fc	5795 lux 538 fc	2034 lux 189 fc	29520 lux 2742 fc	2963 lux 275 fc	1104 lux 103 fc	39180 lux 3640 fc	3984 lux 370 fc	1491 lux 139 fc	93350 lux 8672 fc	8245 lux 766 fc	2933 lux 272 fc
With Fresnel lens Spot 10°	126413 lux 11744 fc	13400 lux 1245 fc	4965 lux 461 fc	N/A	15500 lux 1440 fc	5448 lux 506 fc	130470 lux 12121 fc	13523 lux 1256 fc	4472 lux 415 fc	1700760 lux 15864 fc	17557 lux 1631 fc	5909 lux 549 fc	N/A	25656 lux 2383 fc	9001 lux 836 fc
With Fresnel lens Flood 45°	24780 lux 2302 fc	1767 lux 164 fc	1015 lux 94 fc	34280 lux 3185 fc	4010 lux 373 fc	1502 lux 140 fc	18350 lux 1705 fc	2542 lux 236 fc	955 lux 89 fc	24420 lux 2269 fc	2907 lux 270 fc	1092 lux 101 fc	49960 lux 4641 fc	5822 lux 541 fc	2187 lux 203 fc

Forza Kit



(Light stand is not included)

Forza 60 2KIT-PT

Forza 60 × 2
AC Power Adapter 15V6A × 2
RF-FZ60 Reflector × 2
FL-11 Fresnel Lens (with barndoor) × 1
BH-FZ60 Battery Grip × 2
CC-PT-37 Trolley Case × 1



(Light stand is not included)

Forza 60 3KIT-PT

Forza 60 × 3
AC Power Adapter 15V6A × 3
RF-FZ60 Reflector × 3
FL-11 Fresnel Lens (with barndoor) × 1
BH-FZ60 Battery Grip × 3
CC-PT-37 Trolley Case × 1



(Light stand is not included)

Forza 60/ LumiPad 25 3KIT-P

Forza 60 × 1
AC Power Adapter 15V6A × 1
RF-FZ60 Reflector × 1
LumiPad 25 with Power Adapter (15V2A) × 2
BH-FZ60 Battery Grip × 1
CC-P-38 Carry Case × 1

Forza Kit



(Light stand is not included)

Forza 300 2KIT

Forza 300 × 2

RF-BM Reflector × 2

Control Box Unit with AC Power Adapter × 2

CB-FZ-2.5 Connecting Cable 2.5M × 2

Light Stand Clamp × 2

Trolley Case × 1



(Light stand is not included)

Forza 500 2KIT

Forza 500 × 2

RF-BM Reflector × 2

Control Box Unit with AC Power Adapter × 2

CB-FZ-2.5 Connecting Cable 2.5M × 2

Light Stand Clamp × 2

Trolley Case × 1



© Michal Dunin Tomaszewicz



© Peter Lindgren

Forza Series

Powerful illumination in a compact lightweight design, ranging from 60W to 500W, the Forza series is perfect for all different scale of production.



© Andrew Posonskiy





MAXVILLE

MixPanel RGBWW LED Panel light

RGBWW LED Panel, DMX and WiFi wireless control, Gel emulation and practical effects.

Multi lighting sources, high brightness output in a compact size.



Mixing Colors, Made Easy

Imagine being able to create over 36000 color combinations with just one light!

NANLITE MixPanel allows you to access and manipulate color like never before.

Built-in multiple practical effects, couple with ultra-bright light output and the advanced functions, give you unlimited creative potential.



Mobile APP
Control



Wireless Remote
Control



DMX

MixPanel 60/150

CCT: Color temperature of 2700-7500K, G/M adjustment -50~+50.

HSI/RGBW: Gives you full control of Hue and saturation to achieve up to 36,000 colors.

GEL: 43 gel presets allows for colorful creativity at a push of a button.

Practical Effects: Built-in 10 pre-programmed special effects, easily simulate various easily simulate various scenarios.

Three Light Sources in One: Switch between hard light, soft light, and colored light at the touch of a button.

Three Lighting Modes in One: Included silent mode, normal mode and boost mode, make operating in the strictest sound conditions possible.

Dual Power Supply & USB Port to Support Firmware Updates.

Multiple Light Shaping Accessories: Softbox, Octagonal Softbox etc.



Includes

Light x 1, Barndoor x 1, Power Adapter x 1,
Power Cable x 1, Carrying Bag x 1

Accessories(Optional)

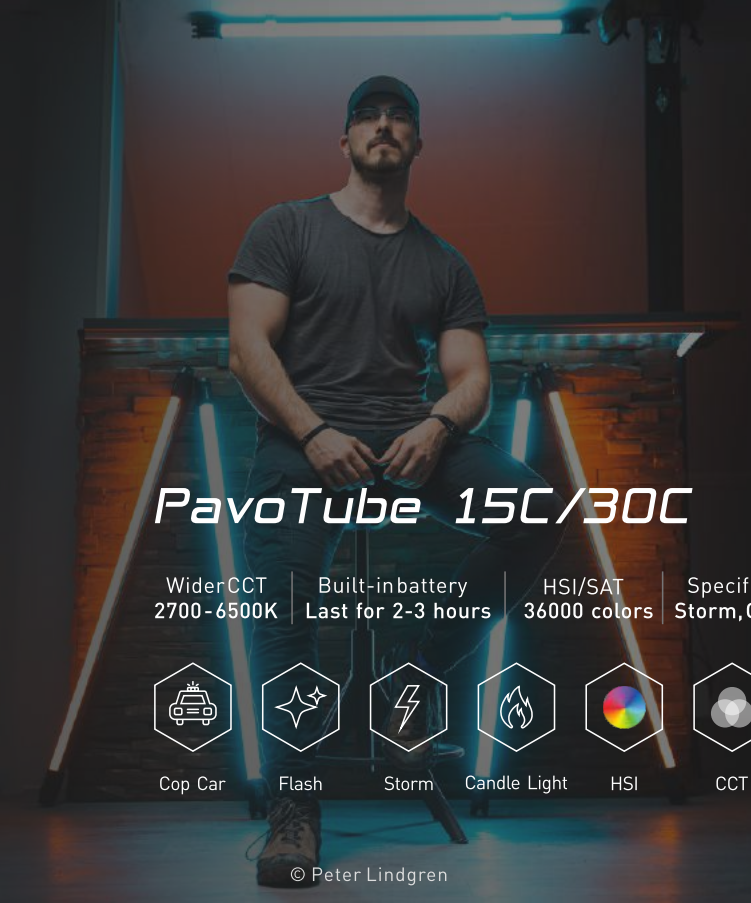


MixPanel *Technical Data*

Model		<i>MixPanel 60</i>	<i>MixPanel 150</i>
Rated Power		64W	164W
Input Voltage/Current		DC 15V/6A Max, AC 100-240V 50/60Hz	DC 15V/7.5A Max, AC 100-240V 50/60Hz
CRI		Average 95	Average 95
TLCI		Average 95	Average 95
CCT		2700K - 7500K	2700K - 7500K
Dimming		0 to 100 % continuous	0 to 100 % continuous
Control		On-board, 2.4G, DMX	On-board, 2.4G, DMX
Special Lighting Effects		Hue Loop, CCT Loop, Flash, Pulse, Storm, Police Car, TV, Paparazzi, Candle / Fire, Disco	
Product Size		426 × 370 × 82mm / 16.77 × 14.57 × 3.23"	482 × 435 × 82mm / 18.98 × 17.13 × 3.23"
Product Weight	Light fixture	3.3kg / 7.28lb	4.1kg / 9.04lb
	Light+Adapter	3.75kg / 8.27lb	4.67kg / 10.3lb

Illumination(lux / fc)

Model		<i>MixPanel 60</i>					<i>MixPanel 150</i>				
Distance		1M	2M	3M	4M	5M	1M	2M	3M	4M	5M
2700K		4756 lux 442 fc	1290 lux 120 fc	596 lux 55 fc	345 lux 32 fc	228 lux 21 fc	10360 lux 966 fc	2869 lux 268 fc	1327 lux 124 fc	768 lux 72 fc	507 lux 47 fc
3200K		5438 lux 505 fc	1485 lux 138 fc	690 lux 64 fc	395 lux 37 fc	261 lux 24 fc	12330 lux 1150 fc	3401 lux 317 fc	1557 lux 145 fc	904 lux 84 fc	600 lux 56 fc
5600K		5844 lux 543 fc	1574 lux 146 fc	729 lux 68 fc	422 lux 39 fc	279 lux 26 fc	13880 lux 1294 fc	3731 lux 348 fc	1746 lux 163 fc	1007 lux 94 fc	663 lux 62 fc
7500K		5695 lux 529 fc	1534 lux 143 fc	707 lux 66 fc	410 lux 38 fc	271 lux 25 fc	13280 lux 1238 fc	3604 lux 336 fc	1641 lux 153 fc	957 lux 89 fc	633 lux 59 fc
R		1600 lux 149 fc	429 lux 40 fc	198 lux 18 fc	116 lux 11 fc	77 lux 7 fc	2841 lux 265 fc	758 lux 71 fc	347 lux 32 fc	203 lux 19 fc	135 lux 13 fc
G		3613 lux 336 fc	958 lux 89 fc	444 lux 41 fc	259 lux 24 fc	174 lux 16 fc	6111 lux 570 fc	1640 lux 153 fc	758 lux 71 fc	444 lux 41 fc	296 lux 28 fc
B		690 lux 64 fc	185 lux 17 fc	85 lux 8 fc	50 lux 5 fc	33 lux 3 fc	1240 lux 116 fc	330 lux 31 fc	152 lux 14 fc	89 lux 8 fc	60 lux 6 fc



PavoTube 15C/30C

Wider CCT
2700-6500K

Built-in battery
Last for 2-3 hours

HSI/SAT
36000 colors

Specific Effects
Storm, Cop Car, etc.



Cop Car



Flash



Storm



Candle Light



HSI



CCT



RGB Cycle

© Peter Lindgren



© Peter Lindgren



© Simone Ferretti



© Crew Ten

Innovative OLED Screen



Easily Controllable



Hexagonal Structure



Instruction



PavoTube 15C

770mm / 2 feet



PavoTube 30C

1170mm / 4 feet



Accessories(Optional)



CB-T-MS
Master-slave Cable



CB-DT/DC
D-TAP Cable with DC socket



CB-DC-1/2
1/2 DC Power Cable



WS-RC-C2
2.4G Remote Controller

PavoTube Kit

The PavoTube is sold in kit which have 1kit, 2kit, 4kit available.
Provide more possibility for your different shooting requirement.



HD-T12-4-BHG

HD-T12-2-BHG

HD-T12-4-P

HD-T12-2-P

HD-T12-1-BHP

HD-T12-1-CP

HD-T12-1-C

HD-T12-1-LA

NOTE: All the tube holders are compatible with PavoTube II 6C and PavoTube 15C/30C.

Battery Run Time

15C:

Charge Time: 3 hours 16 mins

Battery Run Time: 130 mins, up to 25.5 hours

30C:

Charge Time: 3 hours

Battery Run Time: 135 mins, up to 36 hours



(Light stand is not included)

Includes

PavoTube 15C KIT			PavoTube 30C KIT		
1 KIT	2 KIT	4 KIT	1 KIT	2 KIT	4 KIT
Light × 1	Light × 2	Light × 4	Light × 1	Light × 2	Light × 4
Power Adapter × 1	Power Adapter × 1	Power Adapter × 2	Power Adapter × 1	Power Adapter × 1	Power Adapter × 2
T12 Clip × 1	T12 Clip × 2	T12 Clip × 4	T12 Clip × 1	T12 Clip × 2	T12 Clip × 4
Carrying Bag × 1	Carrying Bag × 1	Carrying Bag × 1	Carrying Bag × 1	Carrying Bag × 1	Carrying Bag × 1
Hanging Cable × 2	Hanging Cable × 4	Hanging Cable × 8	Hanging Cable × 2	Hanging Cable × 4	Hanging Cable × 8
/	Master Slave Cable × 1	Master Slave Cable × 3	/	Master Slave Cable × 1	Master Slave Cable × 3
/	1/2 DC Power Cable × 1	1/2 DC Power Cable × 2	/	1/2 DC Power Cable × 1	1/2 DC Power Cable × 2

PavoTube

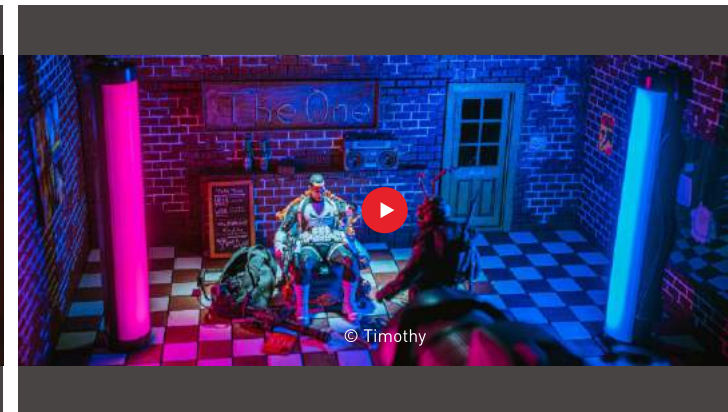
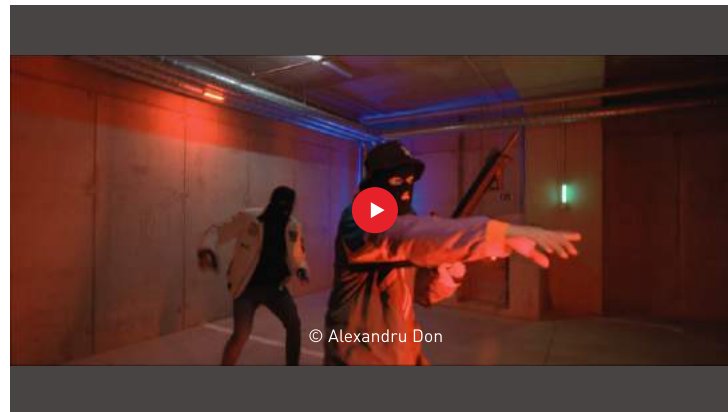
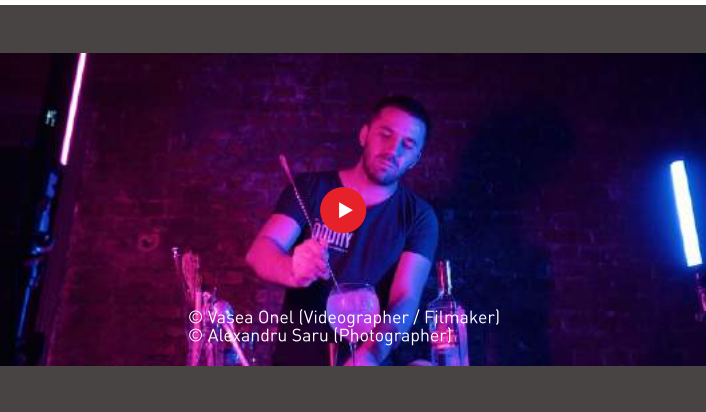
RGBWW LED Tube Light



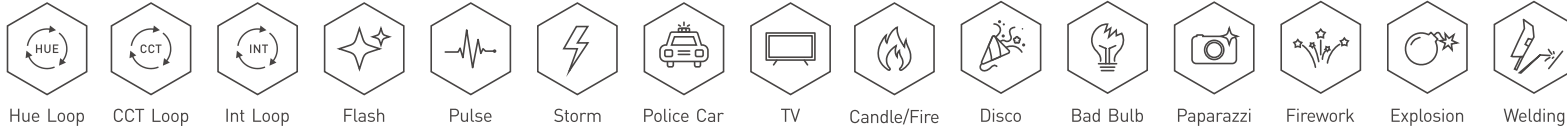
Wireless App
Control



Wireless Remote
Control



PavoTube II 6C *Limitless Colors·Effortless Load*



1. 10in 11W RGBWW LED tube with internal battery, perfect for creating linear lighting sources.
2. Wider CCT from 2700K-7500K with advanced G/M adjustment.
3. HSI mode with 36000 colors options and 15 practical effects.
4. Built-in magnets and 1/4-20 mounts at both ends.
5. A USB Type-C port for charging and future firmware updates.
6. Control: On-board, 2.4G, Bluetooth.

Battery Run Time

Charge Time: 2 hours 30 mins

Battery Run Time: 60 mins, up to 6 hours

Includes

Light x 1, Iron Plate x 3, USB Type-C Cable x 1, Safety Strap x 1, Carrying Bag x 1



Accessories(Optional)

BT-BG-F550 NP-F550 Battery Grip With USB Type-C Cable	AS-BH-1/4 Mini Ball Head with 1/4\" -20 Mount	AS-CP-1/4 Coupler	AS-MSC Mini Super Clamp	EC-PTII6C Eggcrate	CC-S-PTII6C PavoTube II 6C Kit Carrying Case	AS-WB-PTII6C Waterproof Bag	AS-MT/HG-1/4 Mini Tripod & Hand Grip with 1/4 Mount	HD-T12+BH T12 Tube Holder with Mini Ball Head



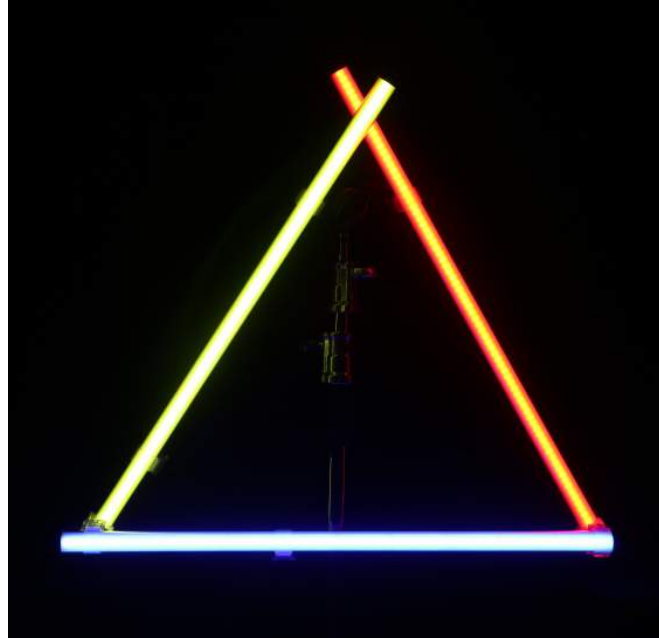
BD-PT15C+EC/BD-PT30C+EC

Parndoor with Eggcrate for PavoTube

Control and shape light, achieve more creative uses.



Dimension: 58.5cm / 1.9ft
98.5cm / 3.2ft
Weight: About 0.95kg / 2lb



HD-T12-CK

DIY Tube Holder

Creative DIY tube light holder, provide you more possibility.



Configuration:
2 in 1 Tube Holder x 2
Aluminous Pole 395mm x 2
Tube Holder x 4

PavoTube *Technical Data*

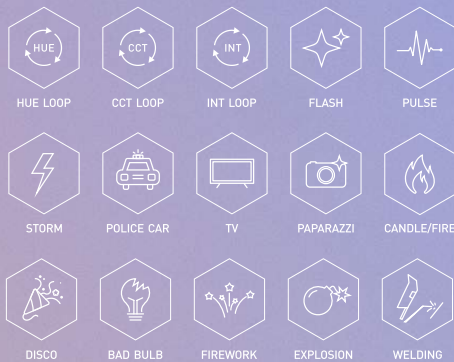
Model	<i>PavoTube 15C</i>	<i>PavoTube 30C</i>	<i>PavoTube II 6C</i>
Rated Power	30W	60W	11W
Input Voltage/Current	DC 15V/2A Max, AC 100-240V 50/60Hz	DC 15V/4A Max, AC 100-240V 50/60Hz	DC 5V/2A (Optional)
CRI	Average 95	Average 95	Average 95
TLCI	Average 95	Average 95	Average 97
CCT	2700K - 6500K	2700K - 6500K	2700K - 7500K (G/M adjustment)
Dimming	0 to 100 % continuous	0 to 100 % continuous	0 to 100 % continuous
Control	On-board, 2.4G	On-board, 2.4G	On-board, 2.4G, Bluetooth
Special Effect	Cop Car, Flash, Storm, Candle Light	Cop Car, Flash, Storm, Candle Light	Hue Loop, CCT Loop, INT Loop, CCT Flash, HUE Flash, CCT Pulse, Hue Pulse, Storm, Police Car, TV, Paparazzi, Candle/Fire, Disco, Bad Bulb, Firework, Explosion and Welding
Product Size	770 × 48 × 48mm / 30.31 × 1.89 × 1.89"	1170 × 48 × 48mm / 46.06 × 1.89 × 1.89"	250 × 39 × 38mm / 9.84 × 1.54 × 1.47"
Product Weight	0.8kg / 1.76lb	1.25kg / 2.76lb	0.26kg / 0.57lb

illumination(lux / fc)

Model	<i>PavoTube 15C</i>			<i>PavoTube 30C</i>					<i>PavoTube II 6C</i>				
Distance	1M	2M	3M	1M	2M	3M	4M	5M	0.3M	0.5M	1M	2M	3M
2700K	307 lux 29 fc	81 lux 8 fc	32 lux 3 fc	473 lux 44 fc	135 lux 13 fc	62 lux 6 fc	34 lux 3 fc	20 lux 2 fc	1361 lux 126 fc	599 lux 56 fc	148 lux 14 fc	37 lux 3 fc	17 lux 2 fc
6500K	352 lux 33 fc	94 lux 9 fc	39 lux 4 fc	579 lux 54 fc	169 lux 16 fc	77 lux 7 fc	42 lux 4 fc	26 lux 2 fc	1540 lux 143 fc	694 lux 64 fc	170 lux 16 fc	43 lux 4 fc	20 lux 2 fc
R	130 lux 12 fc	32 lux 3 fc	14 lux 1 fc	189 lux 18 fc	55 lux 5 fc	26 lux 2 fc	15 lux 1 fc	10 lux 1 fc	654 lux 61 fc	284 lux 26 fc	70 lux 7 fc	18 lux 2 fc	8 lux 1 fc
G	385 lux 36 fc	101 lux 9 fc	43 lux 4 fc	385 lux 36 fc	101 lux 9 fc	43 lux 4 fc	24 lux 2 fc	14 lux 1 fc	1462 lux 136 fc	632 lux 59 fc	159 lux 15 fc	39 lux 4 fc	19 lux 2 fc
B	79 lux 7 fc	20 lux 2 fc	9 lux 1 fc	138 lux 13 fc	39 lux 4 fc	18 lux 2 fc	10 lux 1 fc	7 lux 1 fc	286 lux 27 fc	122 lux 11 fc	30 lux 3 fc	7 lux 1 fc	4 lux 0.4 fc

MIX Series RGBWW Light

Compact and Portable Design,
Three Light Sources in ONE Fixture,
Special Lighting Effects.



MixPad II 11C · 27C *RGWW LED Panel Light*

Bicolor soft light, Bicolor hard light, RGB light



1. Studio Quality Lighting: NANLITE MixPad II series LED panels create bright, color accurate studio lighting with minimal set up and complications. Perfect for live streaming, vlogging, photography, video and more.
2. Three Lighting Sources in One: basic bi-color of hard light, soft light, tuneable RGB lighting.
3. Choose from 15 customizable creative effects.
4. Dual Power Support: can run off either the included AC adapter, Sony NP-F batteries (Not Included), perfect for use in the studio or on location. Its compact size allows you to pack it in your bag and go shoot anywhere.

Includes

MixPad II 11C: Light x 1, 7.5V 2A Power Adapter x 1 (Optional)

MixPad II 27C: Light x 1, 15V 2.4A Power Adapter x 1



MixPad II 11C

MixPad II 27C

Accessories(Optional)



WS-RC-C2
2.4G Remote Controller



NP-F
Battery



CN-58
2 in 1 Charger



AS-MT/HG-1/4
Mini Tripod & Hand Grip
with 1/4 Mount



BD-MPII11C
Barndoor for MixPad II 11C



BD+SB-MPII27C
Barndoor with softbox
for MixPad II 27C



EC-LP25
Eggcrate for
LumiPad 25 / MixPad II 27C

MixWand 18II *RGBWW LED Wand Light*

Main Features

1. Three Lights in ONE Wand: Tunable RGB, adjustable 30°/45° luminous surface with warm and cold light.
2. Combines an advanced SMD lens technology design with increased light output.
3. Built-in flash and color cycle mode in the handheld wand to create different changing shooting effects, expand more possibilities.
4. With improved housing and compact handheld design the MixWand 18II is perfect for light painting, photography lighting and video production.
5. Optimized for use in the studio or on location, MixWand 18II can be powered up with the included power adapter or the NP-F series batteries (Not Included).
6. The optional barndoor with diffuser, make it easy to control over the shape and direction of the light.



Includes

Light × 1, Power Adapter (Power cable 2M with DC plug) × 1,
Power Adapter Connector Plug × 1, Safety Strap × 1

Details



Control Panel



Safety Strap



Sony NP-F Style
Battery Plate



1/4-20 Mount Receiver



15V 1.6A
Adapter

Accessories(Optional)



BD-MW18II+DF
Barndoor with Diffuser



WS-RC-C2
2.4G Remote Controller



NP-F
Battery



CN-58
2 in 1 Charger

Mix *Technical Data*

Model	<i>MixPad II 11C</i>	<i>MixPad II 27C</i>	<i>MixWand 18II</i>
Rated Power	13W	36W	22W
Input Voltage/Current	DC 7.2-15V	DC 15V/2.4A Max, AC 100-240V 50/60Hz	DC 15V/1.6A Max, AC 100-240V 50/60Hz
CRI	Average 95	Average 95	Average 95
TLCI	Average 98	Average 98	Average 95
CCT	2700K-6500K	2700K-6500K	3200K-5600K
Dimming	0 to 100 % continuous	0 to 100 % continuous	0 to 100 % continuous
Control	On-board, 2.4G, Bluetooth	On-board, 2.4G, Bluetooth	On-board, 2.4G
Product Size	165 × 165 × 35mm / 6.50 × 6.50 × 1.38"	348 × 57 × 322mm / 13.70 × 2.24 × 12.67"	590 × 67 × 36.8mm / 23.23 × 2.64 × 1.49"
Product Weight	0.34kg / 0.75lb	1.35kg / 2.97lb	0.49kg / 1.08lb

illumination(lux / fc)

Model	<i>MixPad II 11C</i>			<i>MixPad II 27C</i>			<i>MixWand 18II</i>			
Distance	1M	2M	3M	1M	2M	3M	Distance	1M	2M	3M
3200K (Hard)	819 lux 76 fc	205 lux 19 fc	91 lux 8 fc	2898 lux 269 fc	724 lux 67 fc	322 lux 30 fc	3200K (30°)	2390 lux 222 fc	694 lux 64 fc	322 lux 30 fc
5600K (Hard)	842 lux 78 fc	211 lux 20 fc	94 lux 9 fc	2898 lux 269 fc	725 lux 67 fc	322 lux 30 fc	5600K (30°)	2760 lux 256 fc	807 lux 75 fc	377 lux 35 fc
3200K (Soft)	141 lux 13 fc	35 lux 3 fc	16 lux 1 fc	450 lux 42 fc	113 lux 10 fc	50 lux 6 fc	3200K (45°)	1460 lux 136 fc	405 lux 38 fc	185 lux 17 fc
5600K (Soft)	161 lux 15 fc	40 lux 4 fc	18 lux 2 fc	500 lux 46 fc	125 lux 12 fc	56 lux 5 fc	5600K (45°)	1740 lux 162 fc	471 lux 44 fc	213 lux 20 fc
R	280 lux 26 fc	70 lux 6 fc	31 lux 3 fc	1000 lux 93 fc	250 lux 23 fc	111 lux 10 fc	R	321 lux 30 fc	89 lux 8 fc	42 lux 4 fc
G	632 lux 59 fc	158 lux 15 fc	70 lux 7 fc	2132 lux 198 fc	533 lux 50 fc	237 lux 22 fc	G	600 lux 56 fc	163 lux 15 fc	75 lux 7 fc
B	118 lux 11 fc	30 lux 3 fc	13 lux 1 fc	389 lux 36 fc	97 lux 9 fc	43 lux 4 fc	B	174lux 16fc	48lux 4fc	22lux 2fc

Atmosphere Rendering and Creative Light Painting

With the one-button 3-lighting-mode switch design and the built-in special effect, MixWand 18II can be utilized for various colorful atmosphere rendering and fantastic creative light painting.

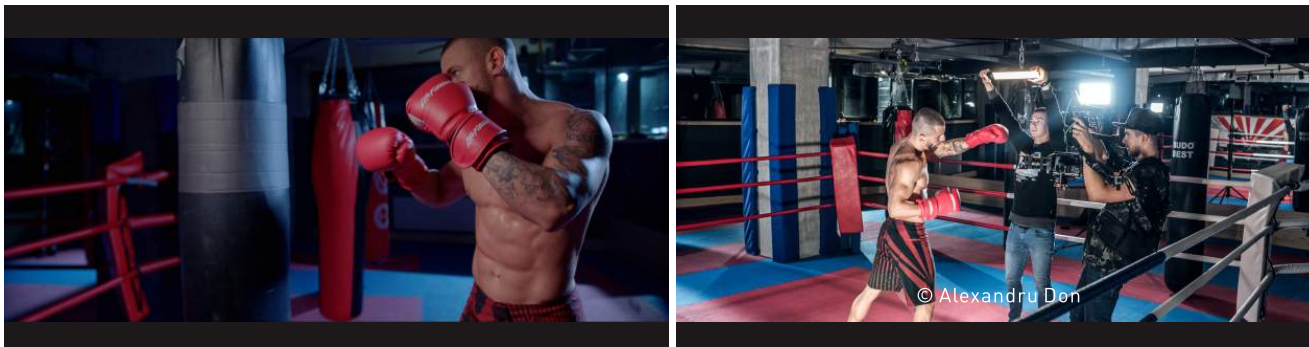
Creative Photography

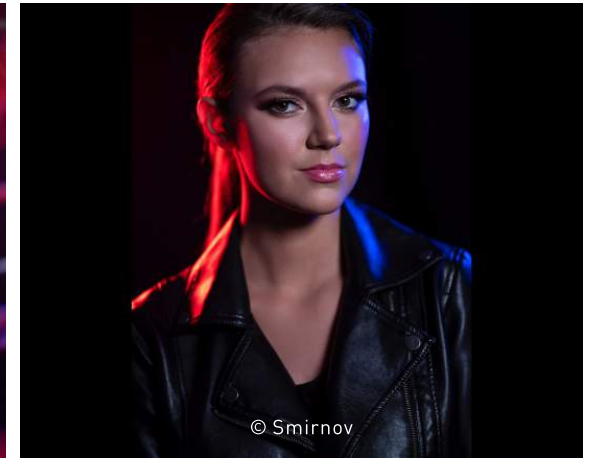
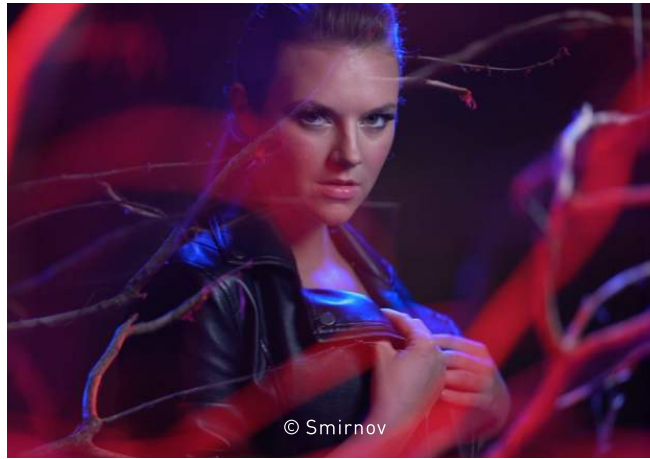
handheld fill light for light painting. 360 kinds of colors can be switched at ease or loop automatically.



Video Production

atmosphere heightening, scene simulation.





MixKIT

Complete portability, compact size, portable to use both on location and indoor.
Utility in your creative work.

MixPad II 11C 3KIT

MixPad II 11C x 3
Power Adapter x 3
Carrying Bag x 1



(Light stand is not included)

MixPad II 27C 3KIT

MixPad II 27C x 3
Power Adapter x 3
Plastic Carrying Bag x 1



(Light stand is not included)

LumiPad Series Soft Panel
Bi-color, Slim Design, High Output, High CRI



LumiPad 11/25

The LumiPad series LED panels combine compact design and impressive brightness making them an ideal option for live streaming, vlogging, photography lighting, video lighting, photo booths and more.

1. Edge lit fixture for soft light output.
2. Adjustable color temperature (3200K -5600K). High CRI and good light quality.
3. Mounting Options:
 - LumiPad 11: 1/4 20" mount and Cold Shoe
 - LumiPad 25: 5/8" receiver.
4. Power Options:
 - Run with either the AC power adapter or optional battery via its NP-F battery plate.

Includes

LumiPad 11: Light x 1

LumiPad 25: Light x 1, 15V2A Power Adapter x 1

Accessories(Optional)

Tripod & Handle, Battery & Charger, EC-LP25

LumiPad Lighting kit

Portable and powerful lighting kit, provide a quick and easy lighting solution to meet more shootings.

LumiPad 25 2KIT

Light x 2, LS-170-5/8 x 2, Light Handle x 2, Power Adapter x 2, Carrying Bag x 1



LumiPad 25

LumiPad 11



LumiPad *Technical Data*

Model	<i>LumiPad 11</i>	<i>LumiPad 25</i>
Rated Power	11.5W	25W
Input Voltage/Current	7.2-15V DC, NP-F series battery	15-24V DC, NP-F series battery
CRI	95	95
TLCI	93	93
CCT	3200K - 5600K	3200K - 5600K
Dimming	0 to 100 % continuous	0 to 100 % continuous
Control	On-board, 2.4G	On-board, 2.4G
Product Size	165 x 165 x 35mm / 6.5 x 6.5 x 1.38"	310 x 345 x 55mm / 12.2 x 13.6 x 2.17"
Product Weight	0.25kg / 0.55lb	1.01kg / 2.23lb

Illumination(lux / fc)

Model	<i>LumiPad 11</i>				<i>LumiPad 25</i>			
Distance	0.5M	1M	2M	3M	0.5M	1M	2M	3M
3200K	1273 lux / 118 fc	320 lux / 30 fc	76 lux / 7 fc	36 lux / 3 fc	3457 lux / 321fc	867 lux / 81fc	216 lux / 20 fc	97 lux / 9 fc
5600K	1278 lux / 119 fc	337 lux / 31 fc	75 lux / 7 fc	39 lux / 4 fc	3570 lux / 332 fc	930 lux / 86 fc	232 lux / 22fc	104 lux / 10fc



FS Series Spot Light

The FS Series of AC powered LED Spot Light to give maximum output while maintaining an even light spread and a high CRI/TLCl of 96/98, ensuring accurate color rendition.

FS-150/200/300 Studio light, Redefined

1. Range from 185W to 350W. provide a great ideal lighting solution for portraits and budget-friendly studio.
2. Accurate daylight-balanced colors at 5600K, CRI: 96 and TLCI: 98
3. Adopting a new innovation in motion and still lighting technology the FS have professionally engineered LED chips that produce an ultra-bright but evenly soft light.
4. Customizable Practical Effects: 11 built-in practical effects that are easy to access and tailor.
5. Multiple with on-board controls and wireless control via 2.4G and Bluetooth, allowing for quick accurate adjustments on set.

Includes

Light x 1, Power Cable x 1

Accessories(Optional)



SB-RT-90X60
Rectangular Softbox



SB-PR90/120-Q
Parabolic Softbox



LT-60/80-QR-FD
Lantern Softbox



FL-20G
Fresnel Lens



WS-RC-C2
2.4G Remote Controller



Model	<i>FS-150</i>	<i>FS-200</i>	<i>FS-300</i>
Rated Power	185W	240W	350W
Input Voltage/Current	AC100-240V 50/60Hz	AC100-240V 50/60Hz	AC100-240V 50/60Hz
CRI	96	96	96
TLCI	98	98	98
CCT	5600K	5600K	5600K
Dimming	0 to 100 %	0 to 100 %	0-100%
Control	On-board, 2.4G, Bluetooth	On-board, 2.4G, Bluetooth	On-board, 2.4G, Bluetooth
Product Size	356 × 213 × 115mm / 14.02 × 8.39 × 4.53"	306 × 232 × 123mm / 12.05 × 9.13 × 4.84"	342.5 × 232 × 123mm / 13.48 × 9.13 × 4.84"
Product Weight	2.27kg / 5.00lb	2.48kg / 5.47lb	2.95kg / 6.49lb

Illumination(lux / fc)

Model	<i>FS-150</i>			<i>FS-200</i>			<i>FS-300</i>		
Distance	1M	2M	3M	1M	2M	3M	1M	2M	3M
Light only	6903 lux 641 fc	1721 lux 160 fc	814 lux 76 fc	7852 lux 729 fc	1978 lux 184 fc	951 lux 88 fc	12550 lux 1166 fc	3074 lux 286 fc	1447 lux 134 fc
with reflector	26380 lux 2451 fc	5651 lux 525 fc	2422 lux 225 fc	29380 lux 2729 fc	6388 lux 593 fc	2776 lux 258 fc	41040 lux 3813 fc	8852 lux 822 fc	3780 lux 351 fc
With Fresnel Lens spot	54890 lux 5099 fc	11360 lux 1055 fc	4737 lux 410 fc	53858 lux 5003 fc	11216 lux 1042 fc	4732 lux 440 fc	50380 lux 4680 fc	10480 lux 974 fc	4387lux 408 fc
With Fresnel Lens flood	15920 lux 1479 fc	3914 lux 364 fc	1741 lux 162 fc	18160 lux 1687 fc	4527 lux 421 fc	2027 lux 188 fc	22610 lux 2100 fc	5658 lux 526 fc	2515 lux 234 fc



FS-150 2KIT-S-LS

Light × 2
Power Cable 4.5M × 2
Reflector × 2
SB-RT-90x60 Softbox × 2
LS-186 Light Stand × 2
CN-T2 Carrying Case × 1



FS-200 2KIT-S-LS

Light × 2
Power Cable 4.5M × 2
Reflector × 2
SB-RT-90x60 Softbox × 2
LS-186 Light Stand × 2
CN-T2 Carrying Case × 1



FS-300 2KIT-S-LS

Light × 2
Power Cable 4.5M × 2
Reflector × 2
SB-RT-90x60 Softbox × 2
LS-186 Light Stand × 2
CN-T2 Carrying Case × 1



FS-150 2KIT-S

Light × 2
Power Cable 4.5M × 2
Reflector × 2
SB-RT-90x60 Softbox × 2
CN-T2 Carrying Case × 1

(Light Stand is not included)



FS-200 2KIT-S

Light × 2
Power Cable 4.5M × 2
Reflector × 2
SB-RT-90x60 Softbox × 2
CN-T2 Carrying Case × 1

(Light Stand is not included)



FS-300 2KIT-S

Light × 2
Power Cable 4.5M × 2
Reflector × 2
SB-RT-90x60 Softbox × 2
CN-T2 Carrying Case × 1

(Light Stand is not included)



FS-150 3KIT-S-LS

Light × 3
Power Cable 4.5M × 3
Reflector × 3
SB-RT-90x60 Softbox × 3
LS-186 Light Stand × 3
CC-ST-85 Carrying Case × 1



FS-150 3KIT-S

Light × 3
Power Cable 4.5M × 3
Reflector × 3
SB-RT-90x60 Softbox × 3
CC-ST-85 Carrying Case × 1

(Light Stand is not included)



FS Series

Spot Light, Redefine Your Studio





COMPAC Series LED Studio Light

Combines a slim profile with an impressive output to create lighting similar to large softboxes but at a fraction of the size. It is an ideal option for lighting portraits, interviews, head shots, live streaming, food photography, vlogging, product photography, and more.

COMPAC *Series LED Studio Light*

The Compac series comes in 6 sizes in different power outputs from 20W to 200W, with daylight and bi-color versions to meet your different shooting requirements.



Daylight		Compac 200		Compac 100		Compac 68		Compac 40		Compac 24		Compac 20
Bi-color		Compac 200B		Compac 100B		Compac 68B		Compac 40B		Compac 24B		

Compac *Technical Data*

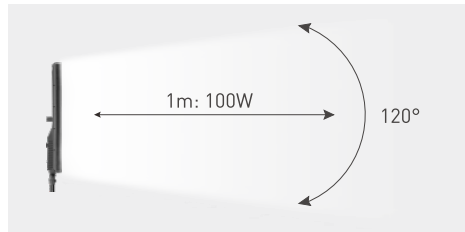
Model	<i>Compac 20</i>	<i>Compac 24/24B</i>	<i>Compac 40/40B</i>	<i>Compac 68/68B</i>	<i>Compac 100/100B</i>	<i>Compac 200/200B</i>
Rated Power	20W	24W	40W	68W	100W	200W
Input Voltage/Current	100-240V AC					
CRI	95					
TLCI	93					
CCT	5600K	5600K / 3200K - 5600K				
Dimming	NO	0 ~ 100 % continuous				
Control	On-board					On-board, 2.4G
Product Size	205 x 140 x 40mm 8.1 x 5.5 x 1.6"	316 x 172 x 75mm 12.4 x 6.8 x 3"	408 x 232 x 80mm 16.1 x 9.1 x 3.2"	566 x 350 x 90mm 22.3 x 13.8 x 3.5"	664 x 400 x 85mm 26.1 x 15.7 x 3.3"	818 x 500 x 105mm 32.2 x 19.7 x 4.1"
Product Weight	0.35kg / 0.77lb	0.72kg / 1.59lb	1.3kg / 2.87lb	2.5kg / 5.51lb	3.3kg / 7.28lb	6kg / 13.2lb

Illumination(lux)

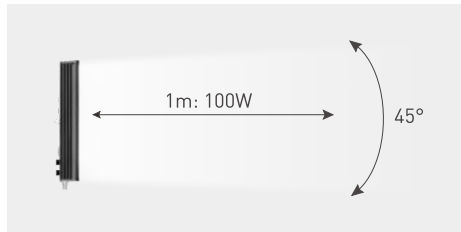
Model	<i>Compac 20</i>	<i>Compac 24/24B</i>		<i>Compac 40/40B</i>		<i>Compac 68/68B</i>		<i>Compac 100/100B</i>		<i>Compac 200/200B</i>	
Distance	5600K	3200K	5600K	3200K	5600K	3200K	5600K	3200K	5600K	3200K	5600K
1M	420	- / 670	716 / 690	- / 1450	1255 / 1540	- / 2263	2052 / 2245	- / 2744	3274 / 2862	- / 4299	4960 / 4751
2M	105	- / 156	187 / 168	- / 345	343 / 367	- / 554	540 / 554	- / 704	886 / 731	- / 1208	1359 / 1224
3M	56	- / 69	84 / 74	- / 150	157 / 163	- / 248	245 / 245	- / 314	396 / 392	- / 551	616 / 553

Main Features

1. Combining a space-saving design with impressive output, achieves lighting similar to a large softbox but at a fraction of the size and none of the set up time.
2. Quickly achieve beautiful, studio-quality results without adding plastic filters or cloth diffusion. Rear controls enable you to dial in brightness from 0-100%.
3. Multiple lighting modifiers, allowing you to control the lighting of Compac more easily.



NANLITE
3274lux (5600K)



Other
2400Lux (5600K)

Includes

Light x 1, Power Cable x 1

Lighting Modifiers (Optional)

Round Softbox / Lantern Softbox for Compac 200/200B/100/100B/68/68B

Providing a softer, more evenly and larger fill light solution with the softbox.

Eggcrate for 200/200B/100/100B

Providing directional control of the output, keeps light off the background, and allows you to light specific areas of your subject.



Round Softbox



Lantern Softbox



Eggcrate

Compac 24B DT1K

Compac 24B Desk Top 1 Kit

Light x 1
Desk Stand x 1



Compac 24B DT2K

Compac 24B Desk Top 2 Kit

Light x 2
Desk Stand x 2



Compac 20 2KIT

Light x 2
Folding Photo Table x 1
Background Papers x 1
Adjustable Bracket x 2
LS-DT-5/8 Light Stand x 2
Connecting Base x 2
Carrying Bag x 1



Compac 100 4KIT+T

with green background whole set

Light x 4
Power Cable x 4
LS-288-5/8 Light Stand x 4
U Shape Background x 1
Frame x 1
Green Cloth x 1



Compac 20 3KIT

Light x 3
Folding Photo Table x 1
Background Papers x 1
Adjustable Bracket x 3
LS-DT-5/8 Light Stand x 2
Connecting Base x 3
Carrying Bag x 1
LS-60-5/8 Light Stand x 1



NOTE: More lighting setup solutions for live-streaming, please visit www.nanlite.com.

LitoLite Series

*Amazing powerful but compact design,
from focusable light to RGBWW pocket light,
provides the convenient for the photography*



LitoLite 5C *Tiny Box, Strong Output, Huge Versatility*

Main Features

1. Wide CCT range of 2700K-7500K with G/M adjustment, CRI: Average 95, TLCI: Average 97
2. Featuring a full control of intensity, hue and saturation, the LitoLite 5C provides a choice of 36000 colors in HSI mode.
3. 15 built-in customizable practical effects, helping creatives simulate accurate lighting scenarios in a second.
4. With a unique magnetic design, allowing it to easily be placed anywhere, ensuring you always get the lighting that you want.
5. Built-in battery offers up to 90 mins run time at full power.

Battery Run Time

Charge Time: 2 hours 20 mins

Battery Run Time: 90 mins, up to 19.5 hours

Includes

Lightx 1, Silicone Rubber Diffuser x 1, USB-C to USB-A Charge Cable x 1, Carrying Bag x 1

Accessories(Optional)



AS-CSA-1/4
Cold Shoe Adapter
With 1/4"-20 Mount



AS-BH-1/4
Mini Ball Head
with 1/4" -20 Mount



BT-BG-F550
NP-F550 Battery Grip
With USB Type-C Cable



AS-MT/HG-1/4
Mini Tripod & Hand Grip
with 1/4 Mount



AS-WB-LL5C
Waterproof Bag
for LitoLite 5C



WS-RC-C2
2.4G Remote Controller
for LitoLite 5C





LitoLite 5C
Tiny box · Strong output · Huge versatility



LitoLite F Series Focusable Light

Powerful Output, Compact Design, Flood and Spotlight Adjustment

1. Powerful and compact LED lights for use on a camera, tripod, or light stand.
2. Offer adjustable, flicker-free, light output with flood and spotlight adjustment.
3. High efficient LED COB with high CRI and standard color temperature.
4. Perfect portable lights are ideal for interview lighting, wedding and event photography / videography, studio lighting, and more.

Includes

LitoLite 8F: Light x 1, Filter x 2, Barndoor x 2, Frame for French Cokin Filter x 1

LitoLite 28F: Light x 1, 15V 2.4A Power Adapter x 1, Carrying Bag x 1, Barndoor x 1, Filter x 1



LitoLite 8F



LitoLite 28F

Accessories(Optional)



BT-BA-SNP/DC
Sony NP Battery Adapter
with DC Socket for LitoLite 28F



NP-F
Battery



LitoLite *Technical Data*

Model	<i>LitoLite 8F</i>	<i>LitoLite 28F</i>	<i>LitoLite 5C</i>
Rated Power	8W	28W	7W
Input Voltage/Current	7.2-12V DC	DC 15V/2.4A Max, AC 100-240V 50/60Hz	DC 5V/2A
CRI	95	95	Average 95
TLCI	93	93	Average 97
CCT	5600K	5600K	2700K-7500K (G/M adjustment)
Dimming	0 to 100 % continuous	0 to 100 % continuous	0 to 100 % continuous
Control	On-board	On-board	On-board, Bluetooth
Product Size	170 x 150 x 80mm / 6.7 x 5.9 x 3.1"	118.5 x 92 x 162mm / 4.67 x 3.62 x 6.38"	108 x 22 x 60mm / 4.2 x 2.4 x 0.9"
Product Weight	0.3kg / 0.7lb	0.61kg / 1.34lb	0.138kg / 0.3lb

illumination(lux / fc)

Model	<i>LitoLite 8F</i>		<i>LitoLite 28F</i>		<i>LitoLite 5C</i>		
CCT	5600K		5600K		Distance	0.3M	0.5M
Distance	Spot 10°	Flood 60°	Spot 20°	Flood 50°	2700K	7236 lux 672 fc	2425 lux 225 fc
1M	4790 lux 445fc	646 lux 60 fc	4656 lux 433 fc	1544 lux 143 fc	3200K	6205 lux 576 fc	2190lux 203 fc
2M	1005 lux 93 fc	155 lux 14 fc	1073 lux 100 fc	376 lux 35fc	5600K	6582 lux 611 fc	2351 lux 218 fc
3M	423 lux 39 fc	67 lux 6.2 fc	462 lux 43 fc	160 lux 15 fc	7500K	7480 lux 695 fc	2496lux 232 fc

halo Series Ring Light

Soft ring light, high brightness with soft light
Create "diamond" ring in your eyes

© Phil Stevens



Perfect for portrait photography, video production, wedding photography, vlogging, cosmetology, hair dressing, still life shooting, makeup tutorial and more.

NANLITE offer different kinds of optional accessories for ring light, providing a more professional lighting solutions to users.



Carrying bag
for halo Series



AS-Mirror-7
Mirror 7" one-sided



AS-Mirror-8
Mirror 8" dual-side



Light Stand



NP-F
Battery



LS-DT-5/8
Desktop Light Stand
with 5/8 mount



AS-Bracket-C
Camera Bracket



AS-Bracket-P
Cell Phone Bracket

halo 10B

Main Features

1. Compact size of 10 inch diameter makes it as the ideal choice for working in small place.
2. With smart touch switch, ensure for silent operation.
3. With standard USB cable, allowing you to utilize any USB fast charger or power bank to power the light.
4. An innovative rotating phone bracket and mirror, makes finding the perfect angle quick and convenient.



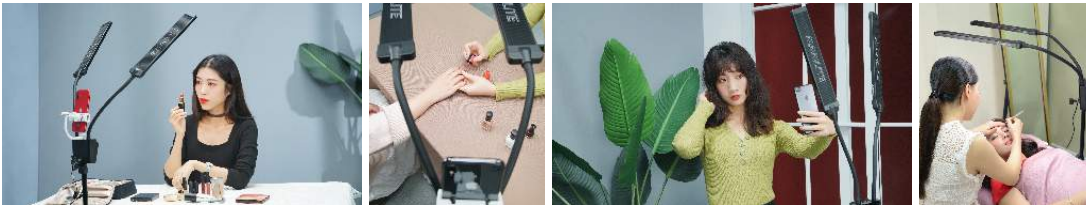
Includes

Light x 1, Mirror x1, Cellphone Bracket x1,
Carrying Bag x 1



Mira 26B

Dimmable Bi-color Beauty Light with Dual Flex Arms and USB Power Passthrough.



Includes

Light x 1, Power Adapter x 1
Cellphone Bracket x 1, Carrying Bag x 1
LS-170-5/8 Light Stand x 1(Optional)



halo Series Ring Light



halo 14

halo 14U

halo 16

halo 16C

halo 18

halo 19



© Iulia Andrei & Cosmin

halo *Accessories (Optional)*



AS-Mirror-8
Mirror 8'' Dual-side



AS-Mirror-7
Mirror 7'' One-sided



LS-DT-5/8
Desktop Light Stand
with 5/8 Mount



AS-Bracket-C
Camera Bracket for halo 16 /
halo 18 / halo 14 / halo 19



AS-Bracket-P
Cell Phone Bracket

CC-S-H14

Carrying Bag for halo 14

CC-S-H16

Carrying Bag for halo 16

CC-S-H18 / 19

Carrying Bag for halo 19 / halo 18



CC-S-H14

CC-S-H16

CC-S-H18 / 19

halo *Technical Data*

Model	<i>halo 10B</i>	<i>Mira 26B</i>	<i>halo 14</i>	<i>halo 14U (Built-in battery)</i>
Rated Power	9.6W x2	26W x 2	24W	16.8W
Input Voltage /Current	DC 5V	DC 15V2.4A, AC 110-240V	100-240V AC	12-16.8V DC; 100-240V AC
CRI	95	95	95	95
CCT	2700K - 6500K	2700K - 6500K	2700K - 6500K	2700K - 6500K
Dimming	0-100% by touch switch	0 to 100 % continuous	0 to 100 % continuous	0 to 100 % continuous
Control	On-board	On-board, 2.4G	On-board	On-board, 2.4G
Product Size	out-diameter:254mm / 10" in-diameter:190mm / 7.5"	690 x 118 x 53mm 27.2 x 4.7 x 2.1"	out-diameter: 345mm / 13.6" in-diameter: 265mm / 10.4"	out-diameter: 343mm / 13.5" in-diameter: 279.4mm / 11"
Product Weight	0.43kg / 0.95lb	0.84kg / 1.86lb	0.65kg / 1.43lb	1.46kg / 3.21lb

Illumination(lux / fc)

Model	<i>halo 10B</i>		<i>Mira 26B</i>				<i>halo 14</i>				<i>halo 14U (Built-in battery)</i>			
Distance	2700K	6500K	2700K	3200K	5600K	6500K	2700K	3200K	5600K	6500K	2700K	3200K	5600K	6500K
1M	197 lux 18 fc	193 lux 18 fc	600 lux 56 fc	609 lux 57 fc	631 lux 59 fc	664 lux 62 fc	283 lux 26 fc	864 lux 80 fc	826lux 77 fc	322lux 30 fc	255 lux 24 fc	307 lux 29 fc	326 lux 30 fc	315 lux 29 fc
2M	51 lux 5 fc	47 lux 4 fc	148 lux 14 fc	153 lux 14 fc	162 lux 15 fc	170 lux 16 fc	75 lux 7 fc	238 lux 22 fc	229 lux 21 fc	91 lux 8 fc	64 lux 6 fc	86 lux 8 fc	91 lux 8 fc	80 lux 7 fc
3M	23 lux 2 fc	22 lux 2 fc	81 lux 8 fc	83 lux 8 fc	85 lux 8 fc	88 lux 8 fc	113 lux 3 fc	113 lux 11 fc	109 lux 10 fc	41 lux 4 fc	26 lux 2 fc	42 lux 4 fc	47 lux 4 fc	35 lux 3 fc

halo *Technical Data*

Model	<i>halo 16</i>	<i>halo 16C</i>	<i>halo 18</i>	<i>halo 19</i>
Rated Power	29W	28W	48W	38W
Input Voltage /Current	12-18V DC; NP-F series battery	15V DC, 100-240V AC	100-240V AC	12-16.8V DC; 100-240V AC
CRI	95	95	95	95
CCT	3200K - 5600K	2700K - 6500K	2700K - 6500K	5600K
Dimming	0 to 100 % continuous	0 to 100 % continuous	0 to 100 % continuous	0 to 100 % continuous
Control	On-board, 2.4G	On-board, 2.4G	On-board	On-board
Product Size	out-diameter: 400mm / 15.7" in-diameter: 305mm / 12"	out-diameter: 406.2mm / 16" in-diameter: 312.8mm / 12.3"	out-diameter: 456mm / 18.3" in-diameter: 305mm / 12"	out-diameter: 485mm / 19.1" in-diameter: 365mm / 14.4"
Product Weight	0.95kg / 2.09lb	1.92kg / 4.2lb	1.55kg / 3.41lb	1.54kg / 3.39lb

illumination(lux / fc)

Model	<i>halo 16</i>		<i>halo 16C</i>					<i>halo 18</i>				<i>halo 19</i>
Distance	3200K	5600K	2700K	6500K	R	G	B	2700K	3200K	5600K	6500K	5600K
1M	430 lux 140 fc	435 lux 40 fc	456 lux 42.38 fc	490 lux 45.54 fc	171 lux 15.59 fc	280 lux 26.02 fc	84 lux 7.81 fc	822 lux 76 fc	470 lux 44 fc	487 lux 45 fc	984 lux 91 fc	5800 lux 539 fc
2M	135 lux 13 fc	135 lux 13 fc	126 lux 11.71 fc	124 lux 11.52 fc	46 lux 4.28 fc	75 lux 6.97 fc	22 lux 2.04 fc	208 lux 19 fc	146 lux 14 fc	155 lux 14 fc	267 lux 25 fc	1660 lux 154 fc
3M	74 lux 7 fc	75 lux 7 fc	59 lux 5.48 fc	59 lux 5.48 fc	22 lux 2.04 fc	36 lux 3.35 fc	11 lux 1.02 fc	100 lux 9 fc	78 lux 7 fc	86 lux 8 fc	125 lux 12 fc	734 lux 68 fc



Forza 150

Take with Easiness, Debut with Brightness

Comprehensive upgrades in terms of intensity, control and interaction have been integrated into Forza 150 that allows for greater creative freedom for on-the-move lighting. This exciting addition to the Forza lineup is focused on offering more pragmatic functions and high output whilst being lightweight, which will undoubtedly make it a loyal partner for all professional content creators and filmmakers.



Light & Mighty
to Imagine More



27960_{lux}

An all in one form factor weighing just 1.36kg/3.00lb and capable of outputting 27,960lux @ 1m (with reflector), the Forza 150 can comfortably be used for small projects as well as large production. Being lightweight with a mighty output will put no limits on your imagination.



Faithful Rendition,
Visual Reality



CCT 5600K
CRI 96 TLCI 98

Forza 150 excels at rendering the subtleties of lifelike color owing to the accuracy of high CRI of 96 and TLCI of 98 at 5600K, which can provide excellent color fidelity.



Simplicity over Complexity

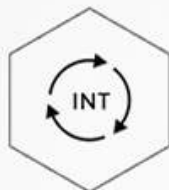


Integrating the lamp head and control unit together ensures Forza 150 is optimized for simple on-the-move usage. A sturdy L-bracket mount, fewer cables and upgraded operating system, will let you create effortlessly at the press of a button and turn of a knob.



Multiple Effects, Full Control

Bold creations are effortlessly enabled by the 11 built-in effects, all easily adjusted with a simple touch. Every shooting demand will be satisfied through easy calibration of critical parameters and truly creating many convincing visual effects.



INT LOOP



FLASH



PULSE



STORM



TV



PAPARAZZI



CANDLE/FIRE



DISCO



BAD BULB



EXPLOSION



WELDING

Control Light, Dominate Scene

Say no to miss-operation with an intuitive interface. Remote control easily accomplished either via Bluetooth direct connection to the NANLINK APP or via 2.4Ghz with our NANLINK BOX.

Greater control DMX and RDM solutions now cater for more niche demands, the Forza 150 is created for creation.



CB-DMX-3.5C-1/2 DMX Adapter Cable (Optional)

The cable adapts 3.5mm plug to standard 5-pin dual XLR connectors(both male and female) to permit connection of fixtures to DMX console.




NANLINK APP

Linking Ideas & Light



Quiet in Close Quarters



Advanced active cooling system allows for shooting in close range or in limited space, ideal for interview and dialogue scenes without the hassle of noise and heat.



Run-and-gun

Apart from AC power supply, Forza 150 also features handheld V-mount battery grip options for swift mobile shooting scenarios. Its ergonomic handheld design allows for enhanced efficiency on set or location.





* It outputs full power when using 26V V-mount battery, while power output decreases to 120W when using 14.8V V-mount battery.

Battery Grip + 14.8V/26V V-mount Battery (optional)



AC Power Adapter 24V/7.5A

The Standard carrying bags feature generous partitions and sufficient protection, perfectly packed with room for a light stand wherever you go!



Includes

Forza 150 x 1, Power Adapter x 1, Power Cable 4.5M x 1,
Reflector x 1, Bowens Adapter x 1, Carrying Bag x 1, User Manual x 1,
DMX Reference Guide x 1



Abundant Accessories, Infinite Creativity

Forza 150 provides compatibility for all the FM mount accessories exclusively developed for the products lineup.

Paired with Bowens adapter will further expand your light shaping possibilities.

Offering a vast range of dazzling accessory options that will awaken infinite imagination possibilities.

Accessories for FM Mount



A5-BA-FMM Bowens Adapter (Included)



LT-FMM-60 Lantern Softbox (Optional)



SB-FMM-60 Softbox (Optional)



FL-11 Fresnel Lens (Optional)



PJ-FMM-19/36
Projection Attachment (Optional)

Endless Light Shaping Possibilities

Accessories for Bowens Mount (Optional)



LT-80/120 Lantern Softbox



SB-PR-90/120-Q Parabolic Softbox



U-1350S/1895T/1450T Umbrella



SB-ST-140X30 Strip Softbox



SB-RT-90X60 Rectangle Softbox



SB-AS-110X45 Asymmetric Softbox

Forza Technical Data

Model	Forza 150		
Rated Power	170W		
Input Voltage/Current	DC 24V / 7.5A Max, AC 100-240V 50 / 60Hz		
CRI	96		
TLCI	98		
CCT	5600K		
Dimming	0-100%		
Control	On-board, 2.4G, Bluetooth, DMX/RDM		
Effect	INT Loop, Flash, Pulse, Storm, TV, Paparazzi, Candle/Fire, Bad Bulb, Firework, Explosion and Welding		
Product Size	Light Fixture: 227 × 133 × 115mm / 8.94 × 5.24 × 4.53"		
Product Weight	Light Fixture: 1.36kg / 3.00lb Power Adapter: 0.64kg / 1.41lb Power Cable 4.5M: 0.4kg / 0.88lb Reflector: 0.14kg / 0.31lb Bowens Adapter: 0.19kg / 0.42lb		
Configuration	Forza 150 × 1 Power Adapter 24V/7.5A × 1 Power Cable 4.5M × 1 Reflector × 1 Bowens Adapter × 1 Carrying Bag × 1 User Manual × 1 DMX Reference Guide × 1		

Illumination (lux / fc)

Model	Forza 150		
Distance	1M	2M	3M
Light Only	6870 lux / 638 fc	1760 lux / 164 fc	858 lux / 80 fc
With Reflector	27960 lux / 2597 fc	6655 lux / 618 fc	2824 lux / 262 fc
With Fresnel Lens flood 45°	17050 lux / 1584 fc	4260 lux / 396 fc	2009 lux / 187 fc
With Fresnel Lens spot 10°	69200 lux / 6429 fc	16800 lux / 1561 fc	7658 lux / 711 fc



PJ-BM-19/36

Bowens Mount Projection Attachment

Vast Compatibility, Ultimate Creativity

By tapping into the unknowns of lighting equipment application, NANLITE always strive to elevate our products to a whole new level motivated by users' enthusiasm for filmmaking ever since its foundation

Now NANLITE releases its PJ-BM-19/36 Bowens Mount projection attachment over recurrent refinement. Without any doubt, its meticulous optics design and compatibility with Forza series fixture with standard Bowens Mount will further broaden the application scenarios and help to raise users' creative vision to a new height for a better light shaping experience.

**Compatible with
Standard Bowens Mount
for More Intensity**



PJ-BM-19/36 Bowens Mount projection attachment have compatibility for Forza series fixtures with standard Bowens Mount. By simply attaching it to the fixture, the output can be raised to a whole new level. Compared with Fresnel lens, PJ-BM-19/36 can concentrate light even further and let more light through to accomplish much more ideal lighting effects.



The illumination of Forza 500 with PJ-BM-19 at 3M equals to

11x light only
3x reflector
1x Fresnel in spot 10°



Refine on the Precision Optics

A refined optical system is crafted to minimize color fringing around the edge of the illumination circle. Excellent light quality is thus accomplished to satisfy users' pursuit of pinpoint accuracy in image.

94%
Uniformity

0.5%
Distortion

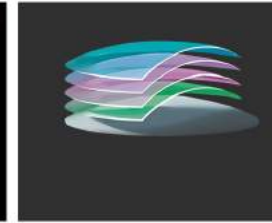
95%
CCT Accuracy



Dull Finish
Make the image more homogeneous and the edge of illumination circle sharper.



Aspherical lens
Eliminate aberration effectively, increase uniformity, reduce distortion.



Optical coating
Improve transmittance and CCT accuracy value.



Versatile and Durable as well

With an aluminum alloy die-cast metal body, PJ-BM-19/36 strikes a balance between durability and weight. Its sturdy build and quality materials gives users peace of mind in creation.

Combination of Stability and Flexibility

Brand New Yoke

The concept of design aims at offering unshakable sturdiness

High-Angles Lighting Downwards

Meet the requirements for close range lighting setup at high angles

Both 5/8" baby mount and 1-1/8" junior pin

Free to be mounted on any different light stands



Thorough Protection for Transportation

PJ-BM-19/36 Bowens Mount projection attachment and all of its accompanying accessories can be well packed inside a consolidated flight case, making transportation safety not a concern any longer.

Various Accessories for the Art of Modifying



Interchangeable Lens:

Adjusted illumination circle while kept maximizing light's output

* Note: One kit includes 1 lens only, 19" or 36", the lens could buy optional.



B Size GOBO:

GOBO projection creates complex light patterns quickly and diversifys light shaping approaches, adding texture to the background and layers to images

*Note: Compatible with B-size GOBOs currently on the market



Gel Frame:

Gel can be added easily and firmly to correct color cast, easy and stable



PJ-BM-AI Adjustable Iris (optional):

Free to control the size of the illumination circle via convenient focusing mechanism, controlling light with creative freedom.



PJ-BM

Technical Data

Model	PJ-BM-19 / 36
Beam Angle	19° / 36°
Compatible Mount	Light Fixture with Standard Bowens Mount
Compatible Product	Forza Series: Forza 200, Forza 300 / 300B, Forza 500 FS Series: FS-150, FS-200, FS-300
Product Size	399 × 267 × 441mm / 15.71 × 10.51 × 17.36"
Product Weight	Bowens Mount Projection Attachment without Lens: 4.2kg / 9.26lb 19° Lens: 3.8kg / 8.38lb 36° Lens: 3.1kg / 6.83lb
Includes	Bowens Mount Projection Attachment without Lens × 1 19° / 36° Lens for Bowens Mount Projection Attachment × 1 Silicone Protective Cap × 1 GOBO in B Size × 4 GOBO Frame × 1 Gel Frame × 1 Flight Case × 1 User Manual × 1
Model	PJ-BM-AI
Product Size	170 × 102 × 8mm / 6.69 × 4.02 × 0.31"
Product Weight	0.14kg / 0.31lb
Includes	PJ-BM-AI Adjustable Iris Diaphragm × 1

Includes

- PJ-BM-19/36 Projection Attachment without Lens x 1
- 19°/36° Lens for Bowens Mount Projection Attachment x 1
- Rubber Protective Cap x 1 , B Size GOBO x 4 , GOBO Frame x 1
- Gel Frame x 1 , Flight Case x 1 , User Manual x 1







PavoTube II X Series

Flows in Shape, Ideas at Will



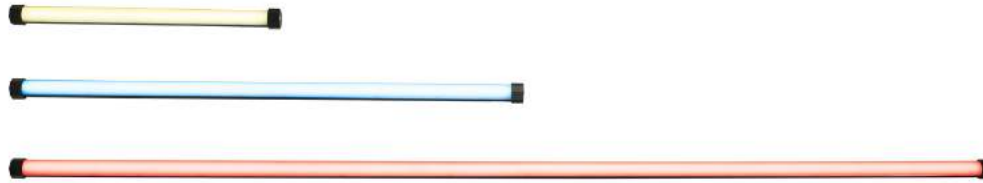


PavoTube II X finally makes its debut after three years' evolution over its predecessor. Getting closer to original PavoTubes users and listening to their needs are our way of making innovations to light up every inspiration sparkle from creators.



Long Enough to Reach the Boundary
of the Imagination

Based on original PavoTube, in addition to the original design of 2ft and 4ft, PavoTube II X also brings 60X of 8ft, which discovers an unknown altitude with its length.



2ft
PavoTube II 15X

4ft
PavoTube II 30X

8ft
PavoTube II 60X

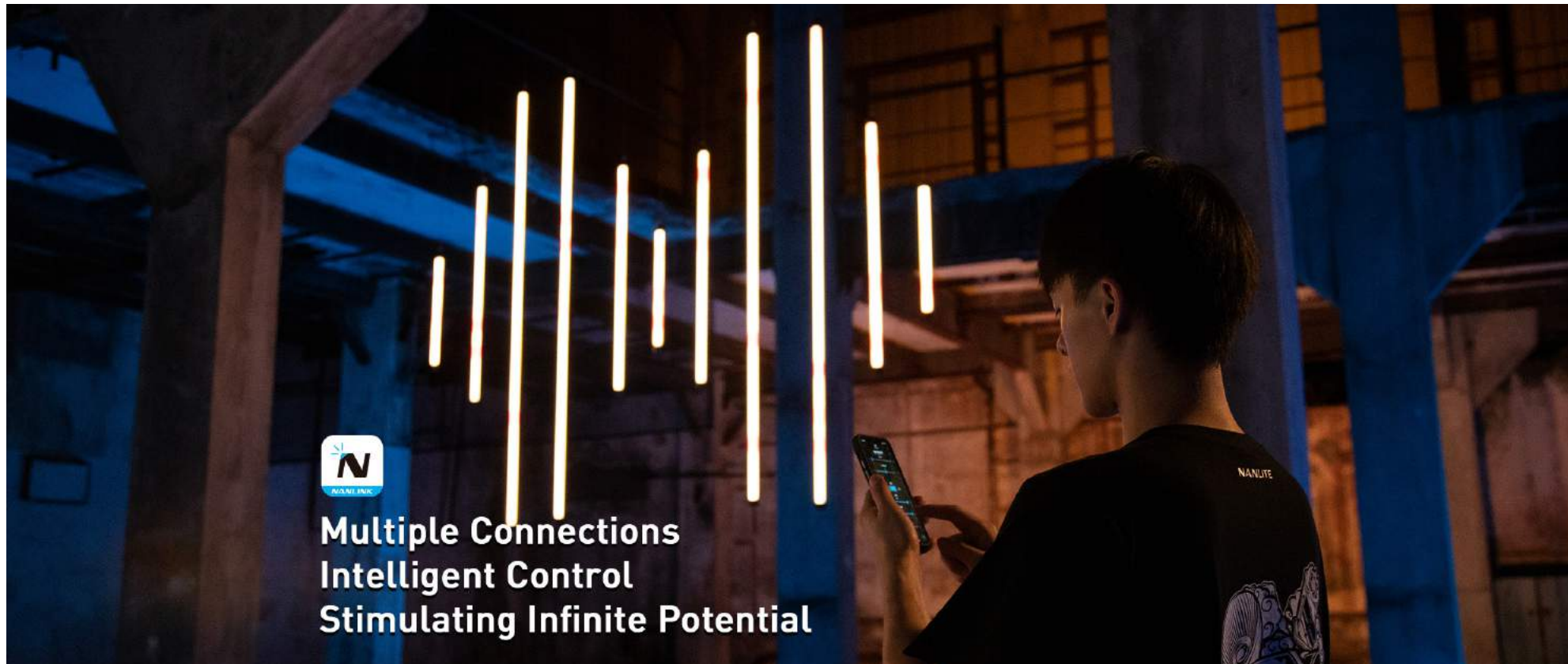
Wide Enough to Expand the Space of the Imagination

RGBWW
Color mixing technology

2700K-12000K
Ultra-wide Range of CCT

G/M Adjustment
+/-100



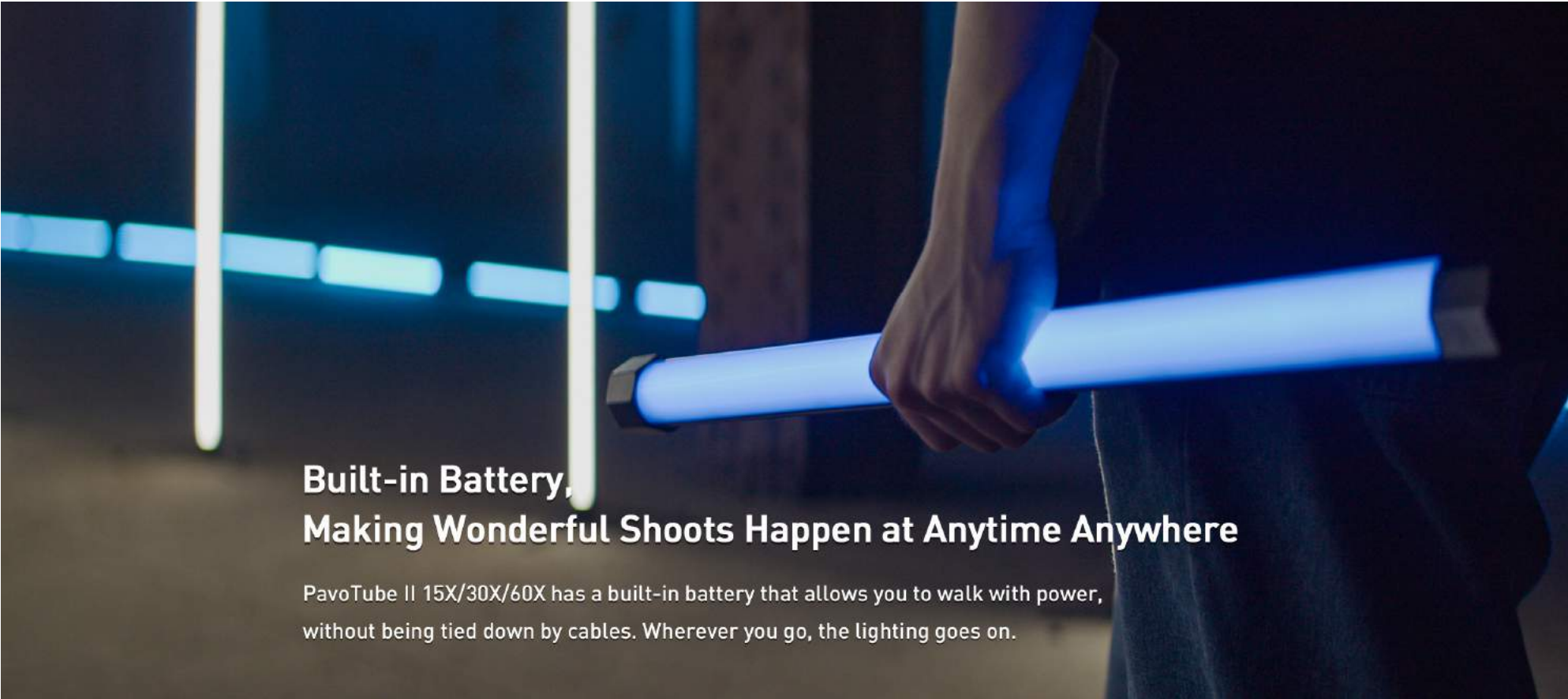


**Multiple Connections
Intelligent Control
Stimulating Infinite Potential**

PavoTube II 15X/30X/60X features a brand-new interface in the light body design and supports wired DMX/RDM for more stable control and wireless control via Bluetooth, 2.4GHz with the NANLINK APP.

This level of professional manipulation enables the creative ideas in your mind to blossom quickly through your fingertips.





**Built-in Battery,
Making Wonderful Shoots Happen at Anytime Anywhere**

PavoTube II 15X/30X/60X has a built-in battery that allows you to walk with power, without being tied down by cables. Wherever you go, the lighting goes on.

**No Matter Where,
It Shines Wonderfully.**



Octagonal Design

The exterior of PavoTube II X follows the octagonal design concept of PavoTube II 6C, allowing the light to be placed from multiple angles.



Standard 1/4-20 Mount Receiver

On the back and both ends of PavoTube II X exists a total of three 1/4-20 mount receiver. With a diverse but common and customized range of accessories that satisfying different shooting requirements and applications.

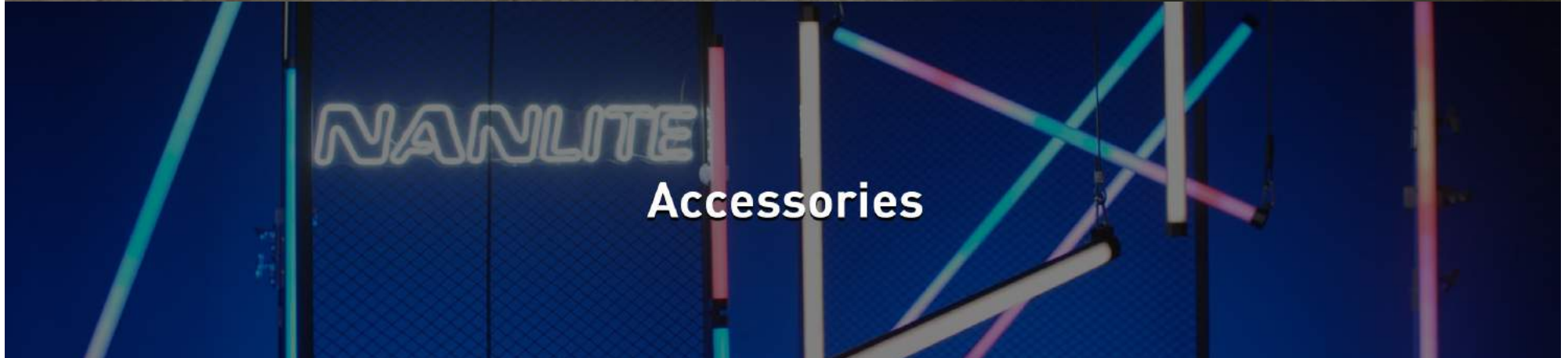




8-Light Kit

Designed to meet the demand from production team to transport fixtures between different shooting scenes.

Each kit can accommodate 8 tubes for all-around protection and also provide individual compartments for power adapters, power cables and other compatible accessories.



Accessories

Includes



PavoTube II 15X/30X 1KIT

PavoTube II 15X/30X × 1, Power Adapter × 1
 Power Adapter Rubber Strap × 1, Power Cable 3M × 1
 Clip × 1, Eyebolt × 2, Carrying Bag × 1
 User Manual × 1



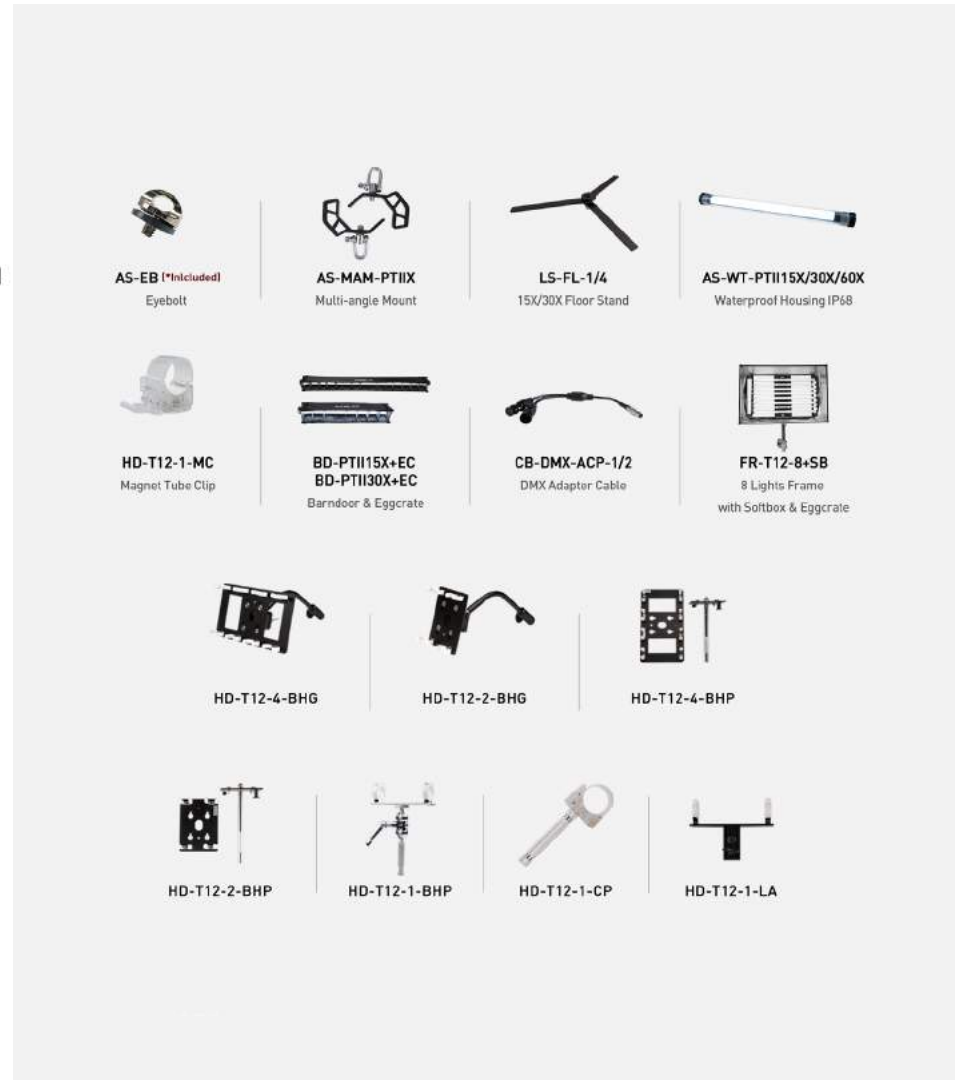
PavoTube II 15X/30X 2KIT

PavoTube II 15X/30X × 2
 Power Adapter × 2
 Power Adapter Rubber Strap × 2
 Power Cable 3M × 2, Clip × 2
 Eyebolt × 4, Carrying Bag × 1, User Manual × 1



PavoTube II 15X/30X 4KIT

PavoTube II 15X/30X × 4
 Power Adapter × 4
 Power Adapter Rubber Strap × 4
 Power Cable 3M × 4, Clip × 4
 Eyebolt × 8, Carrying Bag × 1
 User Manual × 1



AS-EB (*Included)
Eyebolt

AS-MAM-PTIIX
Multi-angle Mount

LS-FL-1/4
15X/30X Floor Stand

AS-WT-PTIIX15X/30X/60X
Waterproof Housing IP68

HD-T12-1-MC
Magnet Tube Clip

BD-PTIIX15X+EC
BD-PTIIX30X+EC
Barndoor & Eggcrate

CB-DMX-ACP-1/2
DMX Adapter Cable

FR-T12-8+SB
8 Lights Frame
with Softbox & Eggcrate

HD-T12-4-BHG

HD-T12-2-BHG

HD-T12-4-BHP

HD-T12-2-BHP

HD-T12-1-BHP

HD-T12-1-CP

HD-T12-1-LA

PavoTube II 15X/30X 8KIT

PavoTube II 15X/30X × 8
 Power Adapter × 8
 Power Adapter Rubber Strap × 8
 8-in-1 Power Adapter Holder × 1
 Power Cable 3M × 8, 1/8 DC Power Cable × 1
 Floor Stand × 8, Clip × 16
 Eyebolt × 16, User Manual × 1, Hard Case × 1

PavoTube II 60X 2KIT

PavoTube II 60X × 2, Power Adapter × 2
 Power Cable 3M × 2, Rubber Strap × 2
 Clip × 4, Eyebolt × 4, User Manual × 1

PavoTube II 60X 8KIT

PavoTube II 60X × 8, Power Adapter × 8
 Power Cable 3M × 8, 1/8 DC Power Cable × 1
 Clip × 16, Eyebolt × 16, User Manual × 1
 Magnet Tube Clip × 16, Multi-angle Mount × 16
 DMX Adapter Cable × 8, Flight Case × 1



Lighting Modifiers

Lighting modifier is the key to creating amazing images.

Each NANLITE lighting modifier is with their own effect on continuous light and provide more lighting effects possibilities.

Different size and style fit for your different requirements.

Softbox Parabolic Forza-60

Item No.: SB-FZ60
Dimension: $\phi 58 \times 30\text{cm} / 22.83 \times 11.81''$
Weight: 1.24kg / 2.73lb
Compatibility:
NANLITE Forza 60/60B & Bowens mount
Fabric Eggcrate: EC-FZ60 (Optional)
Includes 2 diffusers: 1 and 2 Stops



Softbox Parabolic 90 (Easy up)

Item No.: SB-PR-90Q
Dimension: $\phi 90 \times 63\text{cm} / 35.43 \times 24.80''$
Weight: 1.46kg / 3.22lb
Compatibility: Bowens mount
Fabric Eggcrate: EC-PR90 (Optional)
Includes 2 diffusers: 1 and 2 Stops



Softbox Parabolic 120 (Easy up)

Item No. : SB-PR-120Q
Dimension: $\phi 120 \times 74\text{cm} / 47.24 \times 29.13''$
Weight: 1.86kg / 4.10lb
Compatibility: Bowens mount
Fabric Eggcrate: EC-PR120 (Optional)
Includes 2 diffusers: 1 and 2 Stops



Softbox Parabolic 150

Item No.: SB-PR-150
Dimension: $\phi 150 \times 110\text{cm} / 59.06 \times 43.31''$
Weight: 1.86kg / 4.10lb
Compatibility: Bowens mount
Fabric Eggcrate: EC-PR150 (Optional)
Includes 2 diffusers: 1 and 2 Stops



Softbox MixPanel-60

Item No.: SB-MP60
Dimension: $38 \times 43 \times 21\text{cm} / 14.96 \times 16.93 \times 8.27''$
Weight: 0.3kg / 0.66lb
Compatibility: MixPanel 60
Fabric Eggcrate: Included



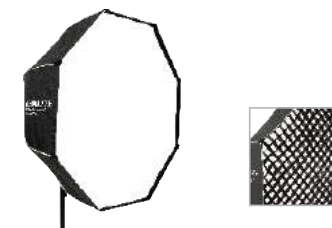
Softbox MixPanel-150

Item No.: SB-MP150
Dimension: $50 \times 45 \times 21\text{cm} / 19.69 \times 17.72 \times 8.27''$
Weight: 0.36kg / 0.79lb
Compatibility: MixPanel 150
Fabric Eggcrate: Included



Octagonal Softbox MixPanel 150

Item No.: SB-MP150-0
Dimension: $\phi 112 \times 51.37\text{cm} / \phi 44.09 \times 20.22''$
Weight: 1.72kg / 3.79lb
Compatibility: MixPanel 150
Fabric Eggcrate: Included



Lighting Modifiers

Umbrella Deep Silver 135

Item No.: U-135DS
Dimension: ϕ 1350 x 880mm / 53.15 x 74.02"
Weight: 0.92kg / 2.03lb



Umbrella Deep Translucent 165

Item No.: U-165DT
Dimension: ϕ 1650 x 1100mm / 64.96 x 43.31"
Weight: 1.05kg / 2.31lb



Umbrella Shallow Translucent 180

Item No.: U-180ST
Dimension: ϕ 1800 x 1100mm / 70.87 x 43.31"
Weight: 1.05kg / 2.31lb



Lantern Softbox 60

Item No.: LT-FZ60
Dimension:
 ϕ 450mm, 430mm height
 ϕ 17.72", 16.93" height
Weight: 0.53kg / 1.67lb
Compatibility:
NANLITE Forza 60/60B & Bowens mount
Skirt: Included



Lantern Softbox 80

Item No.: LT-80
Dimension:
 ϕ 800mm, 580mm height
 ϕ 31.50", 22.83" height
Weight: 1.31kg / 2.89lb
Compatibility: Bowens mount
Skirt: Included



Lantern Softbox 120

Item No.: LT-120
Dimension:
 ϕ 1200mm, 830mm height
 ϕ 47.24", 32.68" height
Weight: 1.91kg / 4.21lb
Compatibility: Bowens mount
Skirt: Included



Quick Release 80 Lantern Softbox

Quick Release 80 Lantern Softbox
Item No.: LT-80-QR-FD
Dimension:
Unfold Size:
 ϕ 800 x ϕ 800 x 580mm / ϕ 31.49 x ϕ 31.49 x 22.83"
Fold Size: 180 x 180 x 1045mm / 7.08 x 7.08 x 41.14"
Weight: 1.13kg / 2.49lb
Compatibility: Bowens mount



Softbox Strip-140x30

Item No.: SB-ST-140x30
Dimension: 1400 x 300 x 400mm / 55.12 x 11.81 x 15.75"
Weight: 1.35kg / 2.98lb
Compatibility: Bowens mount
Fabric Eggcrate: Optional



Softbox Asymmetric 110x45

Item No.: SB-AS-110x45
Dimension: 1100 x 430 x 340mm / 43.31 x 16.93 x 13.39"
Weight: 1.13kg / 2.49lb
Compatibility: Bowens mount
Fabric Eggcrate: Optional



Softbox Rectangle-90x60

Item No.: SB-RT-90x60
Dimension:
Unfolded size: 900 x 600 x 300mm / 35.43 x 23.62 x 11.81"
Folded size: 550 x 205 x 50mm / 21.65 x 8.07 x 1.97"
Weight: 0.77kg / 1.70lb
Compatibility: Bowens mount
Fabric Eggcrate: N/A



Round/Lantern Softbox Compac 200/200B

Item No.: SB-CP200-R / LT-CP200-R
Dimension: 948 x 860 x 158mm / 37.3 x 34.0 x 62.2"
Compatibility: Compac 200/200B



Round/Lantern Softbox Compac 100/100B

Item No.: SB-CP100-R / LT-CP100-R
Dimension: 765 x 630 x 158mm / 30.1 x 24.8 x 6.2"
Compatibility: Compac 100/100B



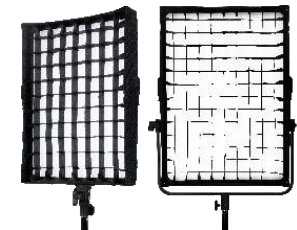
Round/Lantern Softbox Compac 68/68B

Item No.: SB-CP68-R / LT-CP68-R
Dimension: 730 x 610 x 155mm / 28.7 x 24.0 x 6.1"
Compatibility: Compac 68/68B



Eggcrate for Compac

Item No.: EC-CP200/100
Dimension: 700 x 500mm / 27.6 x 19.7";
550 x 400mm / 21.7 x 15.7"
Compatibility: Compac 200/200B/100/100B



Accessories



CN-58

NANLITE 2-in-1 Reciprocal Battery Charger
Not only a charger but also a power bank
Input voltage: 5V 2.4A DC
Output Voltage: 8.4V (Max 1A) DC, 5V (Max 1A) DC
Compatibility: Sony NP-F, NP-FM Series Batteries
Power Cord: Included



PA-7.5V2A

NANLITE Power Adapter 7.5V 2A
Compatibility: MixPad II 11C, etc.



CB-DT/DC

NANLITE D-TAP Cable with DC Socket
Compatibility:
NANLITE Forza 60, PavoTube series,
SA series, etc.



BT-VBC-14.8V/26V

NANLITE V-mount Battery Converter
(Convert the battery from 14.8V to 26V)
For Installing the 14.4-14.8V / 12A V-mount battery,
allowing you to power fixture with an input voltage of
26V and output of 150W or below.



BT-CGV-26V-1

NANLITE Battery Charger
for Single 26V V-mount Battery
Compatibility: 26V V-mount Battery



BT-CGV-14.8V-1

NANLITE Battery Charger
for Single 14.8V V-mount Battery
Compatibility: 14.8V V-mount Battery



BT-V-14.8V160

NANLITE V-mount Battery 14.8V 160WH
Battery Capacity: 14.8V 160WH
Compability: NANLITE Forza 60/60B, Forza 300



BT-V-26V230 / BT-V-26V270

NANLITE V-mount Battery 26V 230WH / 26V 270WH
Battery Capacity:
26V 230WH / 26V 270WH
Compatibility:
NANLITE Forza 300, Forza 500, MixPanel 150 etc.



BT-CGV-26V-2

NANLITE Battery Charger for
Dual 26V V-mount Battery
Compatibility:
26V V-mount Battery

RC-1

NANLITE Bi-color Remote Controller
Channel: 512
Control Distance: 15M



WS-RC-C2

NANLINK 2.4G Remote Controller
Power Source: CR2032 Button Battery
Channel: 12
Control Distance: 10M



BT-BA-SNP/V

NANLITE V-mount Adapter for Sony Battery
Compatibility: Sony NP-F series Battery × 2 pcs



BT-BA-SNP/DC

Sony NP Battery Adapter with DC Socket



BT-BA-V

NANLITE External Battery Base
Compatibility: Sony V-mount Battery



BT-SNP-6AA

NANLITE Sony NP-F Mount Adapter for 6 pcs AA Batteries
Compatibility: LED Light with Sony NP-F Mount



CN-CGR-D / 3E / E8 / E6

NANLITE Battery Base Adapter
Compatibility: Panasonic CGR-D Battery, Nikon Battery
Canon E8 Battery, Canon E6 Battery



CN-B08

NANLITE Hotshoe Adapter
Compatibility:
The Light with 1/4"-20 Mount Receiver



CN-B09

NANLITE Metal Clamp



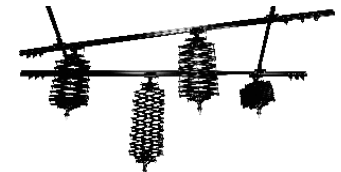
AS-MT/HG-1/4

Mini Tripod & Hand Grip with 1/4 Screw
Rotation Angle: 0°-120°
Dimension: 120 x 40mm / 4.72 x 1.57"
Compatibility: The Light with 1/4"-20 Mount Receiver



CN-D4

NANLITE Professional Rail System
Dimension: 3 x 3m / 9.84 x 9.84ft



Accessories PROFESSIONAL CARRYING CASE

Forza 300/500 Carrying Case

Forza 500 2KIT-ST

Material: Oxford Cloth, Flannel

Inner Dimension:

64.5 x 32 x 32.5cm / 25.39 x 12.60 x 12.80"

Outer Dimension:

66.5 x 34 x 36.5cm / 26.18 x 13.39 x 14.37"

Weight: About 7kg / 15.43lb



Trolley Case

CC-ST-85

Material: Cloth, MDF

Dimension: 61 x 34 x 59cm / 24.02 x 13.39 x 23.23"

Weight: About 7.2kg / 15.87lb

Packed Item:

600/900/1200 series x 3 pcs

LS-216-5/8 / LS-186-5/8 x 3 pcs



LED 2KIT Portable Bag

CN-T2

Material: Cloth, PVC

Dimension: 61 x 24 x 50cm / 24.02 x 9.45 x 19.69"

Weight: About 4.3kg / 9.48lb

Packed Item:

600/900/1200 series x 2 pcs

LS-216-5/8 / LS-186-5/8 x 2 pcs



Plastic Trolley Case

CC-PT-62

Material: ABS

Inner Dimension:

58.1 x 36 x 29.8cm / 22.87 x 14.17 x 11.73"

Outer Dimension:

62.5 x 35.9 x 44.8cm / 24.61 x 14.13 x 17.64"

Weight: About 2.3kg / 5.07lb



Plastic Trolley Case

CC-PT-37

Material: ABS

Inner Dimension:

51 x 29 x 24cm / 20.08 x 11.42 x 9.45"

Outer Dimension:

56 x 35.5 x 29cm / 22.05 x 13.98 x 11.42"

Weight: About 2kg / 4.41lb



LED 3KIT Portable Bag

CN-T3

Material: Cloth, PVC

Dimension: 61 x 35 x 50cm / 24.02 x 13.78 x 19.69"

Weight: About 6.3kg / 13.89lb

Packed Item:

600/900/1200 series x 3 pcs

LS-216-5/8 / LS-186-5/8 x 3 pcs



Plastic Carry Case

CC-P-38

Material: ABS

Dimension: 47 x 24 x 34cm / 18.50 x 9.45 x 13.39"

Weight: About 2kg / 4.41lb



Accessories LIGHT STAND

LS-186-5/8

Material: Aluminum Alloy
Setting Height:
About 49-186cm / 19.29-73.23"
Weight: About 5kg / 11.02lb



LS-170-5/8

Material: Iron
Setting Height:
About 73-170cm / 28.74-66.93"
Weight: About 3kg / 6.6lb



LS-216-5/8

Material: Aluminum Alloy
Setting Height:
About 50-195cm / 19.69 x 76.77"
Weight: About 4kg / 8.82lb



LS-288-5/8

Material: Iron Pipe and Aluminum Section
Setting Height:
About 108-290cm / 42.52-114.17"
Weight: About 6kg / 13.23lb



LS-300-HD

Material: Aluminum Alloy
Setting Height:
About 140-310cm / 55.12-122.05"
Weight: About 8kg / 17.64lb



LS-C-330-5/8

Material: Aluminum Alloy
Setting Height:
About 145-328cm / 57.09-129.13"
Weight: About 8.1kg / 17.86lb





Backdrop Elevator Series

BE-U1

Electric Expander Set



BE-RC

Radio Controller
Supply Voltage: 220V / 110V
Control Distance: 15M



BE-RR

Radio Receiver



BE-3R

3-axle remote control electric background support elevator kit
Suitable for mounting on the wall or ceiling



BE-2RS

2-axle remote control electric background support elevator kit
Holder Hooks: Included
Suitable for mounting on the wall, ceiling or lighting stand



BE-4R

4-axle remote control electric background support elevator kit
Suitable for mounting on the wall or ceiling



BE-3RS

3-axle remote control electric background support elevator kit
Holder Hooks: Included
Suitable for mounting on the wall, ceiling or lighting stand



BE-6R

6-axle remote control electric background support elevator kit
Suitable for mounting on the wall or ceiling



BE-4RS

4-axle remote control electric background support elevator kit
Holder Hooks: Included
Suitable for mounting on the wall, ceiling or lighting stand



Backdrop Elevator Series

BE-1

1-axle manual background support kit
Suitable for mounting on the lighting stand



BE-2

2-axle manual background support kit
Suitable for mounting on the lighting stand



BE-3

3-axle manual background support kit
Suitable for mounting on the lighting stand



BE-4

4-axle manual background support kit
Suitable for mounting on the lighting stand



BE-6

6-axle manual background support kit
Suitable for mounting on the lighting stand



BE-SK1

Background Support Stand
Max. Height: 286cm / 112.60"
Length: 300cm / 118.11"
Length of Each Cross Bar: 100cm / 39.37"



BE-R3

Assembled Tube set
Diameter: ϕ 5.1cm / 2.01"
Assembled Length: 300cm / 118.11"
Length of Each Bar: 100cm / 39.37"
Suitable for hanging up manual control or electric background support elevator





PHOTOQUIP® INDIA LTD

Corporate Office

PHOTOQUIP INDIA LIMITED
10/116 Vidyalankar College Road,
Antop Hill, Wadala East,
Mumbai 400037, Maharashtra, India

Phone: +91 22 24110110

Phone: +91 22 24110110

www.photoquip.com | Email: info@photoquip.com



Find out about us